



## A fresh approach to pharmacometric modeling.

KIWI – a cloud-based interface to NONMEM – was developed for scientists by scientists to assist in streamlining the model development process. While pharmacometricians turn biology into math, KIWI turns chaos into dependability.

### Why KIWI?

- Enhances collaboration among an entire department or company
- Offers multi-user 24/7 secure access
- Provides validated, reliable organization and processing of information
- Minimizes need for IT support
- Streamlines workflow through an intuitive user interface
- Offers point and click access to model development
- Provides searchable framework for regulatory traceability
- Allows more “think time” for scientists
- Evolves with Pharma of the Future

### Multiple post-processing tools for:

- Generating NONMEM result tables
- Computing summary statistics of NONMEM results
- Generating customized graphs
- Facilitating summarization of covariate searches
- Comparing parameter estimates across models
- Flagging the critical path of model development
- Exporting formatted/validated report-ready figures and tables

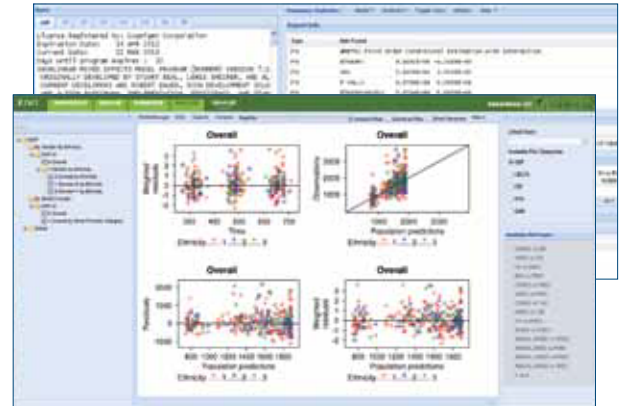


# KIWI is ready. Are you?

- Queue a large number of jobs to run in a batch process
- Submit parallel NONMEM runs (if a multiple processor and licensing option is selected)
- Receive email notifications when each NONMEM run starts and completes
- Evaluate whether a NONMEM job is in a loop and needs to be discontinued
- Receive 100GB storage (expandable as needed)
- Maintain security and confidentiality of data and analysis results
- Receive reliable backup to ensure that data are secure and readily available

## Do more with KIWI.

- Organize workspace in an access-controlled, workflow-inspired directory structure
- Create control streams with syntax highlighting
- Check control streams' meta-information prior to submission
- Review run queue
- Review NONMEM results and all output files
- Create tables for individual models and dynamic comparison of models
- Compare parameter estimates across models dynamically
- Highlight informational and error messages from a NONMEM report file
- Track parameter meta-information for parameter labels, definition of standard or customized variability models, and variable types (parameters vs. continuous or categorical covariates)
- Automatically generate summary statistics of precision, magnitude of variability, correlation, and parametric confidence intervals
- Automatically create p-value tables from covariate models
- Run GAM analysis
- Create validated R-based diagnostic plots including goodness-of-fit plots, eta-distribution plots, delta plots, individual predictive overlay plots, and visual predictive check plots
- Access multiple model evaluation methods, including bootstrapping and visual predictive check interfacing with PsN
- Export Word and HTML tables and diagnostic graphs at the click of a button for reports or incorporation into presentations
- Log and store runs with backend database
- Ensure files will not be accidentally overwritten or lost, and can be easily identified by file name or unique run number



To learn more about licensing KIWI, contact Simulations Plus at +1.716.633.3463.