

Installation Instructions for Standalone ADMET Predictor™ 8

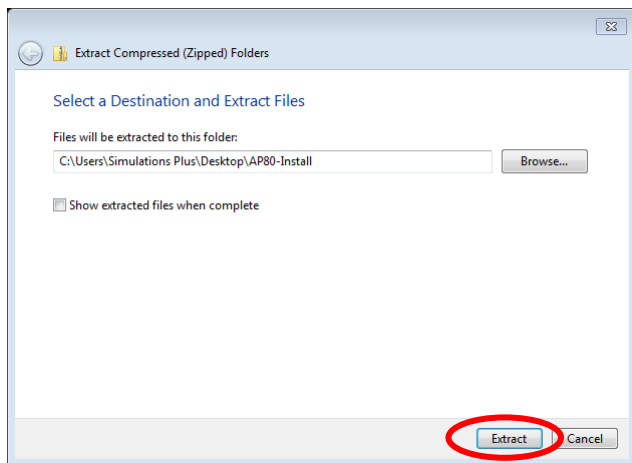
Before you begin

In order to install ADMET Predictor™, you must have Administrative privileges.

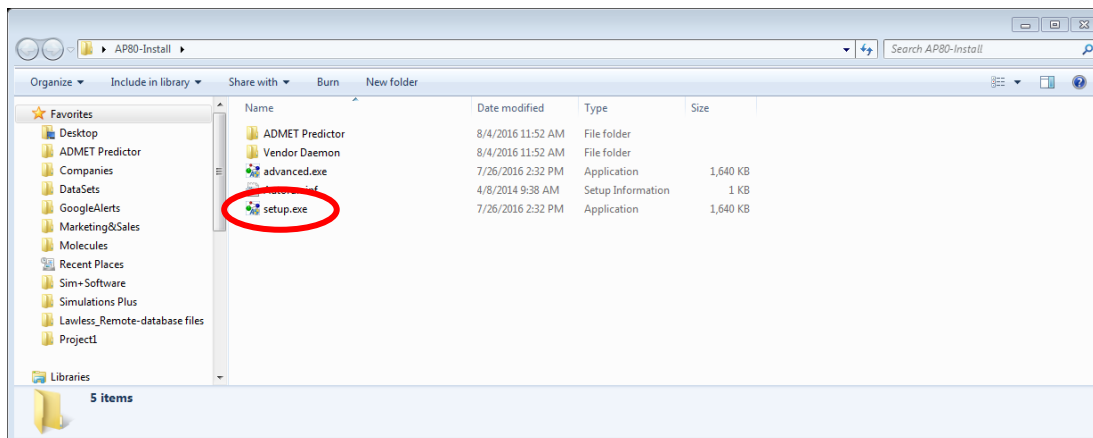
During the ADMET Predictor installation process, a file named SLP_HOSTID_Info.txt will be created on your desktop. This file needs to be emailed to licensing@simulations-plus.com in order to create your license file. We will generate a license file (LicenseFile.lic) that is specific to your computer. The file will be emailed to you and needs to be imported into the Flexera licensing system in order to run the ADMET Predictor. The directions for importing the file are at the end of this document.

Installation

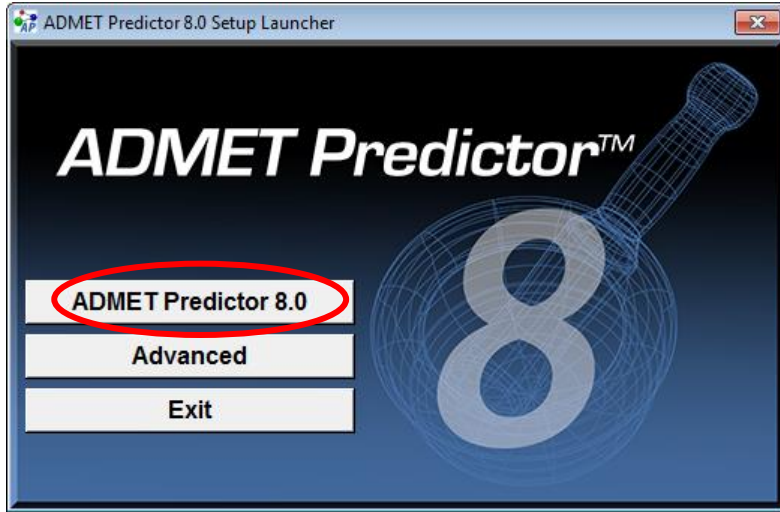
The first step in the process is to extract the files from the AP80-Install.zip file. Right mouse click on the AP80-Install.zip file and select “Extract All...”. The dialog box below will appear. Accept the default destination folder and click on “Extract”.



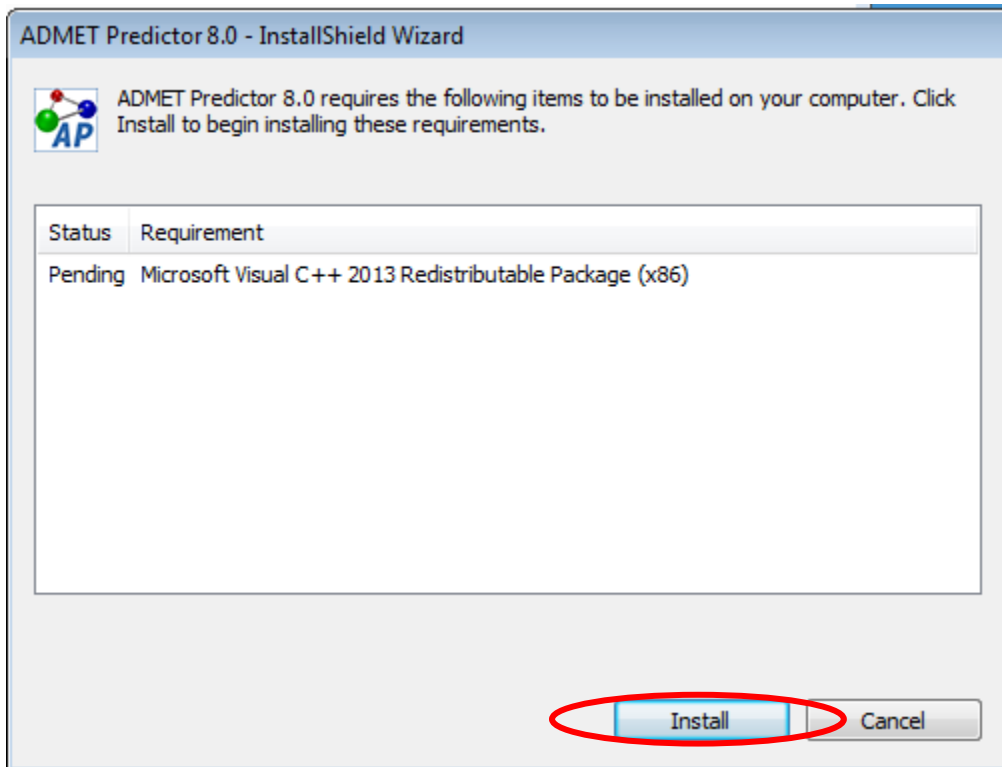
In the AP80-Install directory, double click on the “setup.exe” icon:



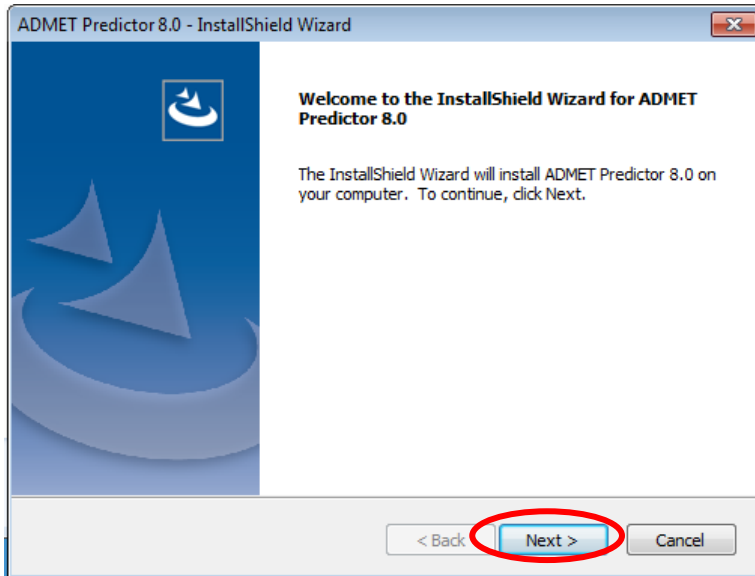
This will bring up the dialog box below. Click on the “ADMET Predictor 8.0” button.



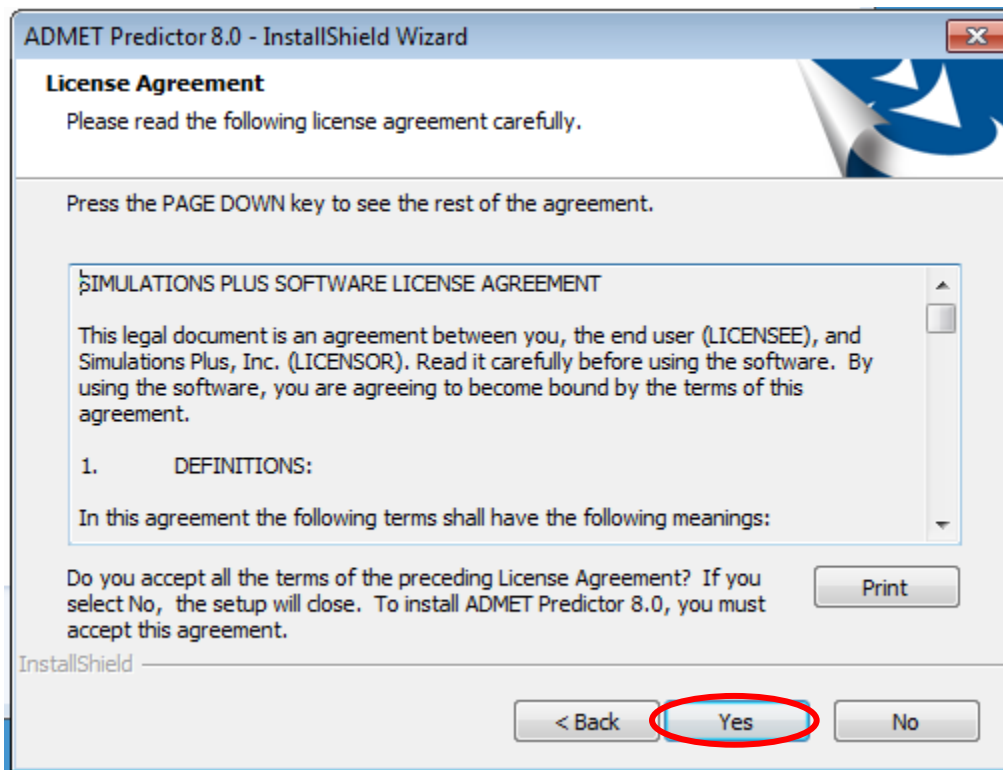
The dialog box below will appear *if the required dependencies do not exist on your system*. Click on the “Install” button to install the Microsoft Visual C++ 2013 Redistributable Package (x86).



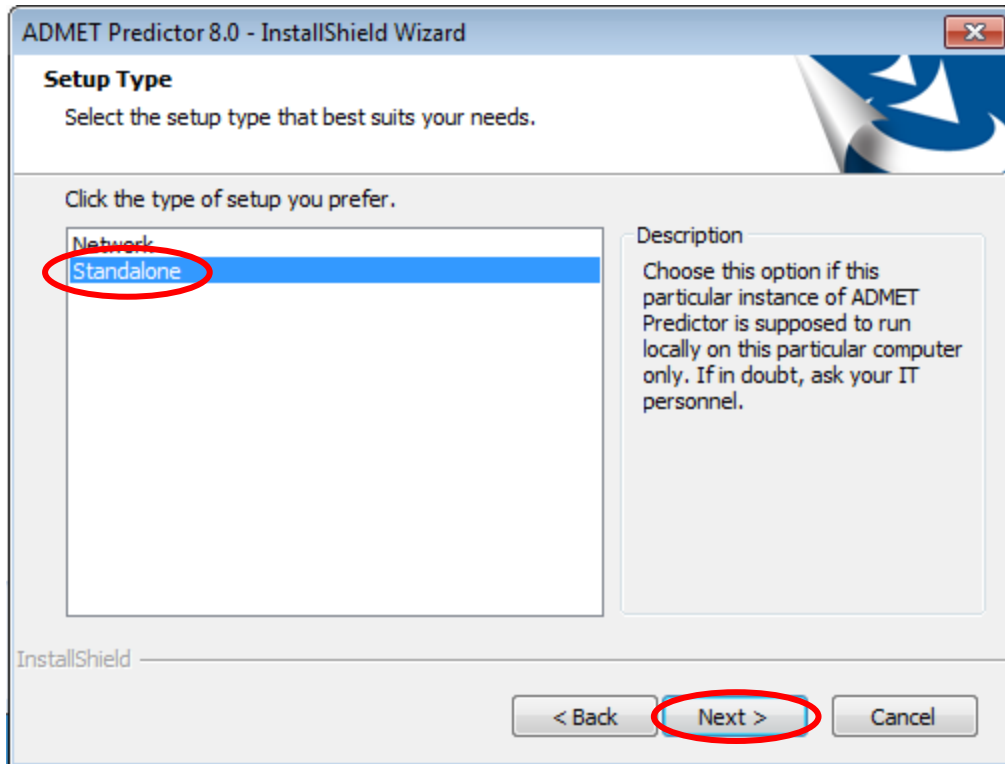
Once the dependencies have been installed, the installation process will continue. The ADMET Predictor installation wizard will begin with the dialog box below. Click “Next”.



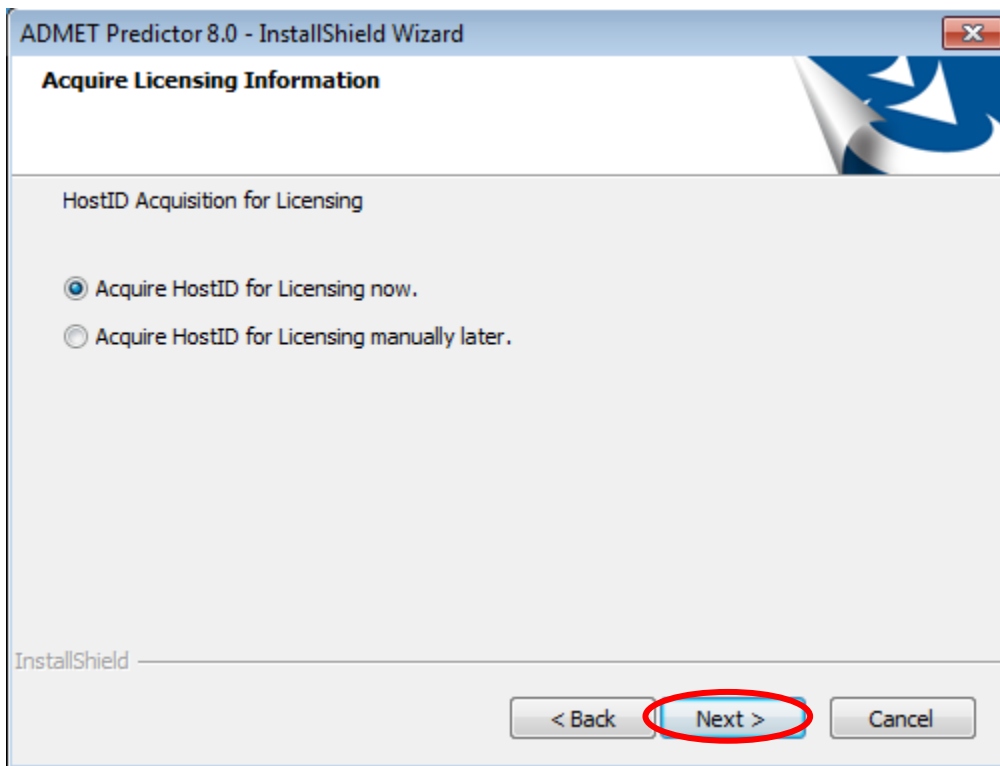
This will bring up the dialog box below. Click “Yes” to agree to the License Agreement.



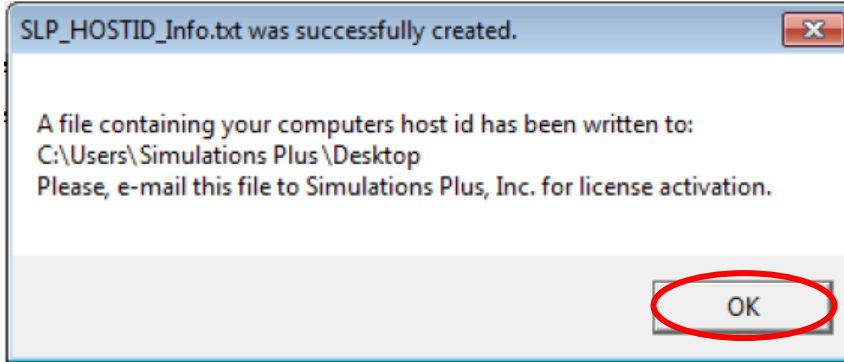
The dialog box below will then be displayed. Change to “Standalone” and click “Next”.



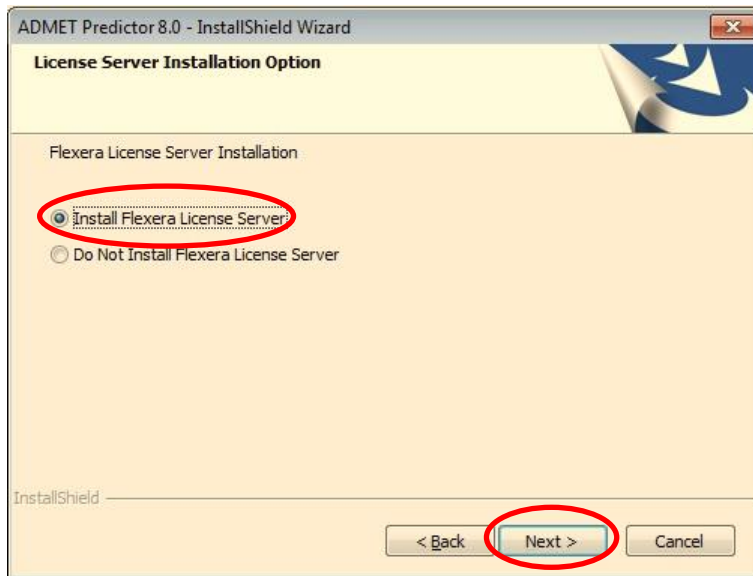
The dialog box below will then be displayed. Make sure that “Acquire HostID for Licensing now.” is selected. Then click “Next”.



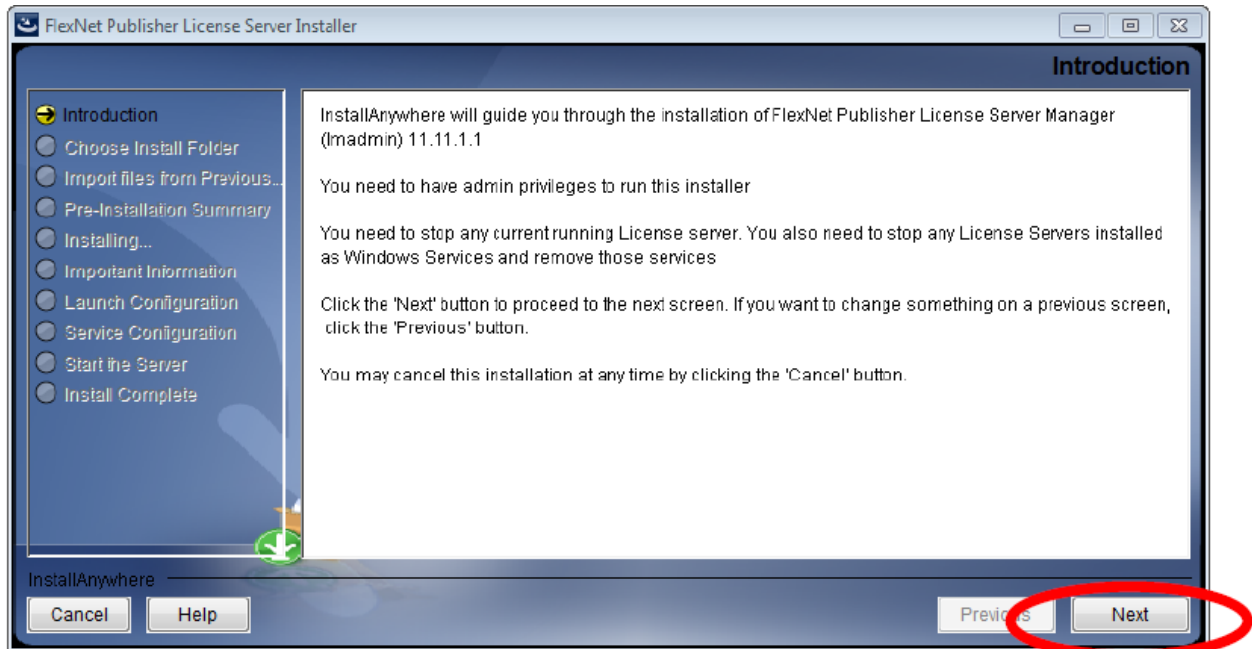
The message below indicates that the SLP_HOSTID_Info.txt file has been created. Please email this file to Simulations Plus (licensing@simulations-plus.com). We will then generate a license file for you. The license file will need to be importing into the Flexera licensing server. The direction for importing the file are the at the end of this document.



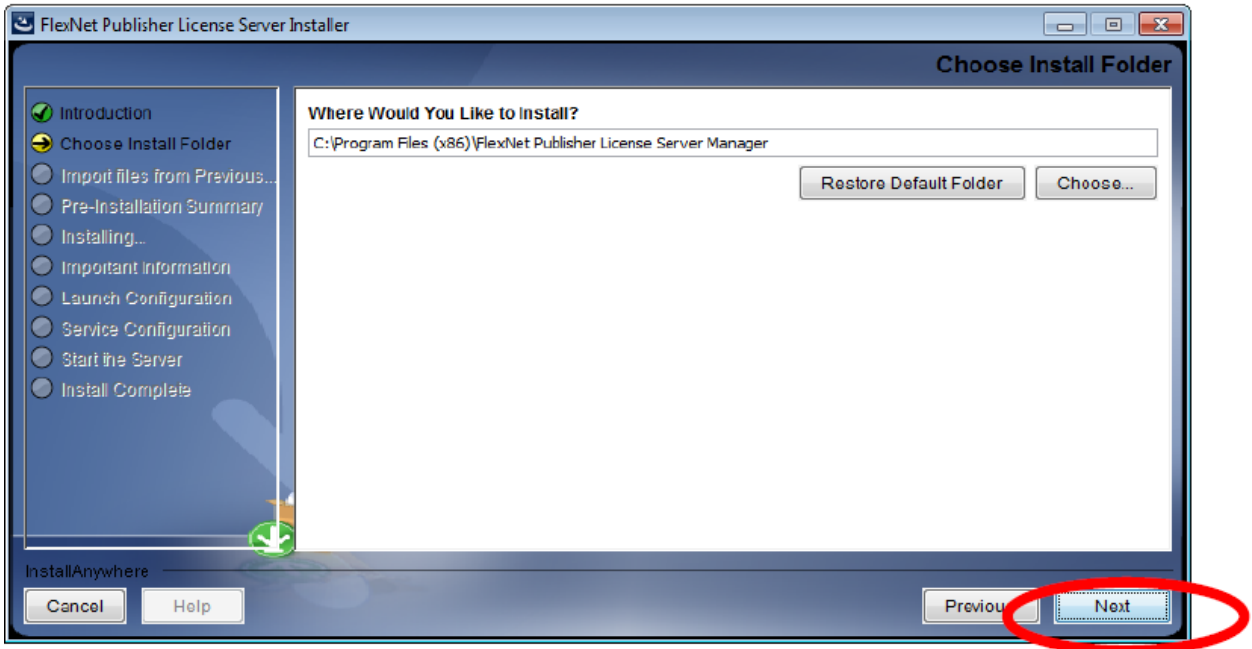
The dialog box below will then be displayed. Please select “Install the Flexera License Server” and then click on “Next”.



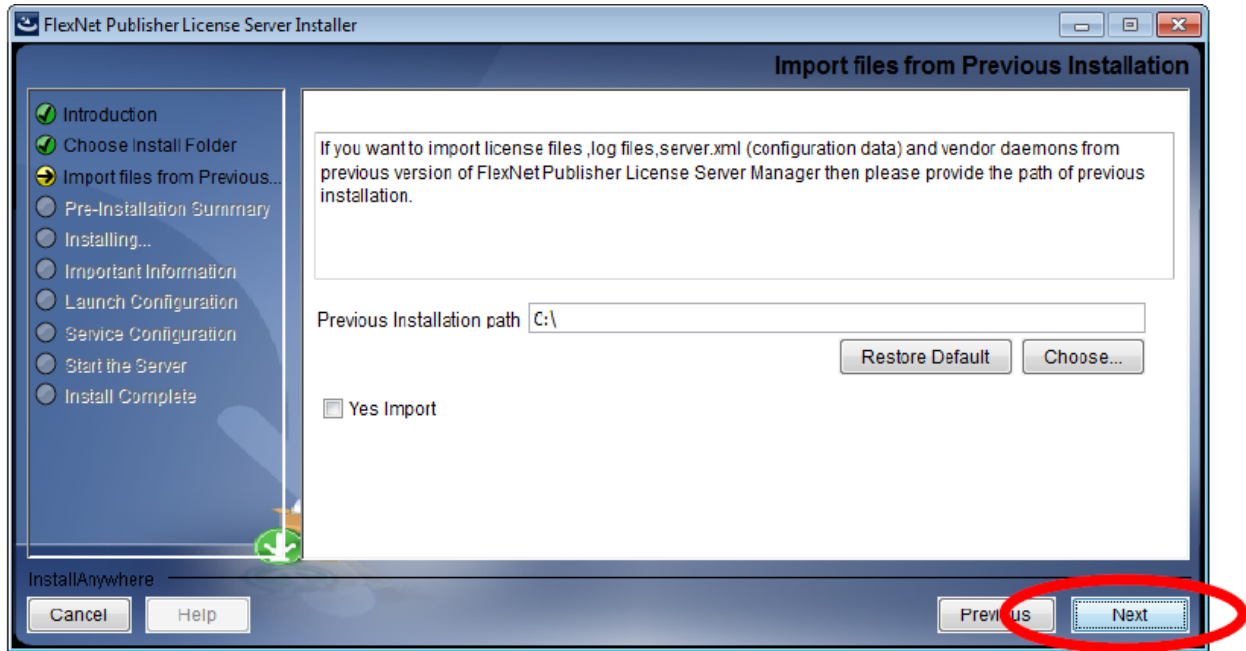
The dialog box below will be displayed. Click “Next” to continue.



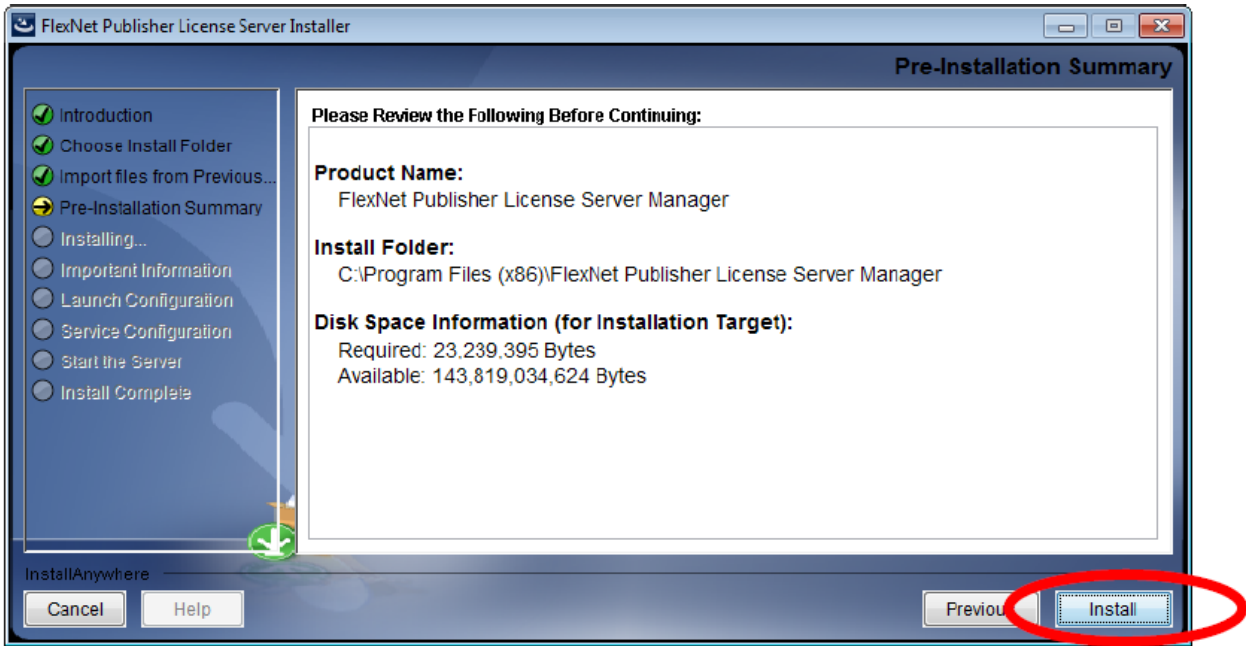
Now you will be presented with an option to select the installation folder. Unless there is a specific need to change the location, the default location is recommended. Click “Next.”



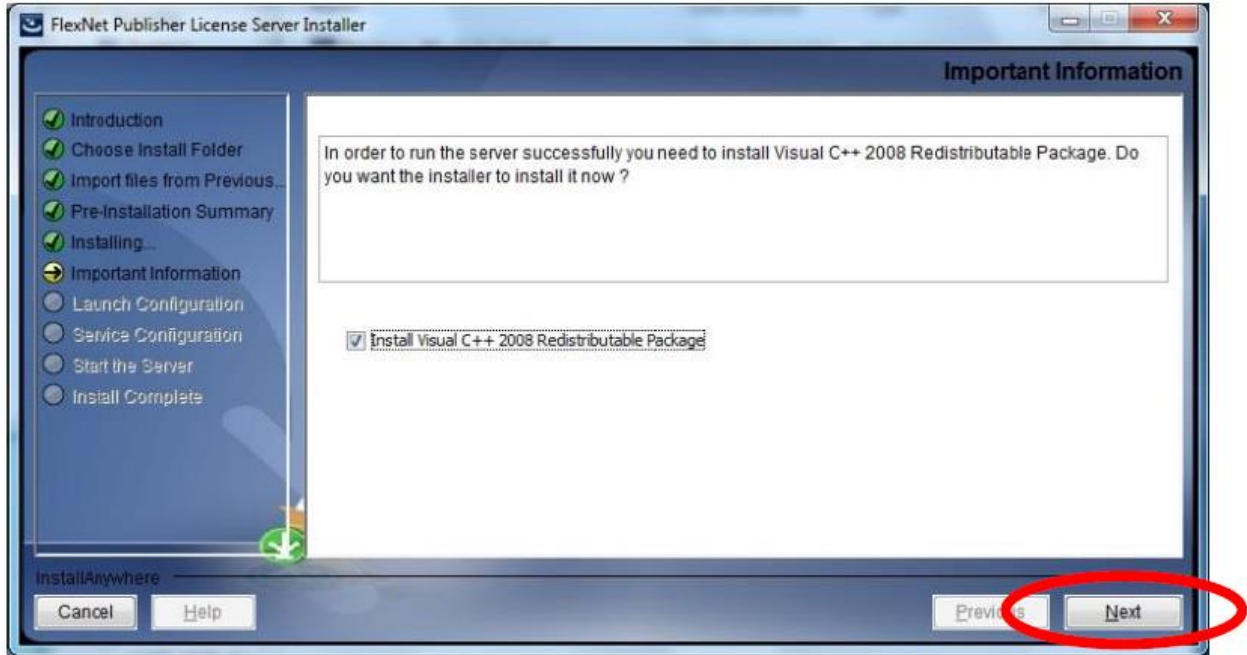
If needed, you can import existing licensing data. This can usually be skipped. Leave the default settings and click “Next”.



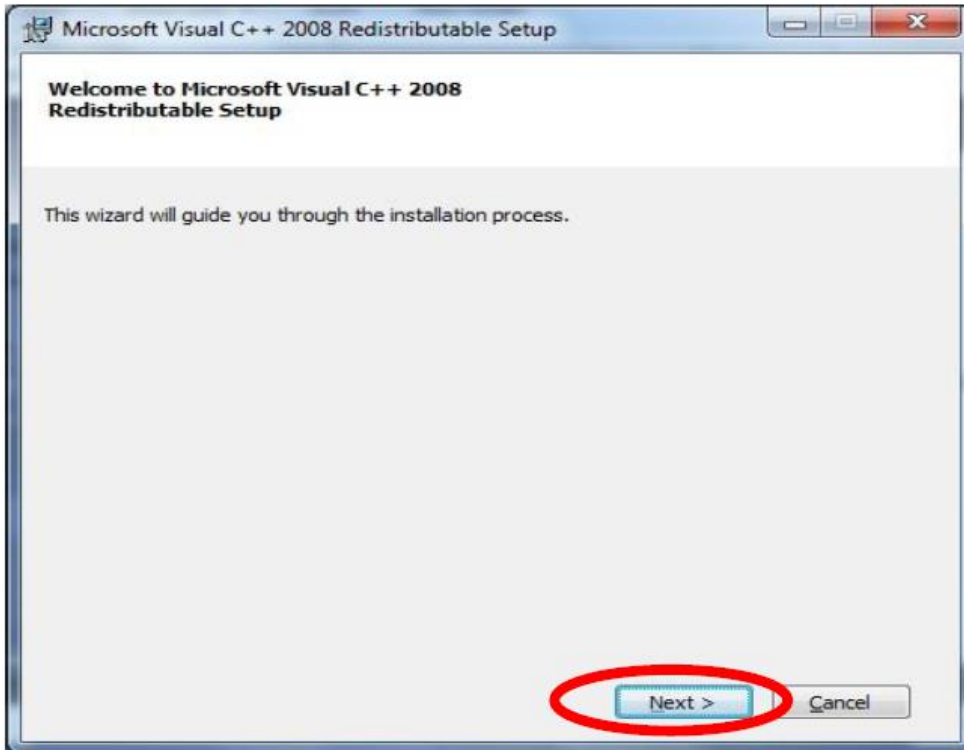
The installer has the information needed to begin installing files. Click the “Install” button to continue.



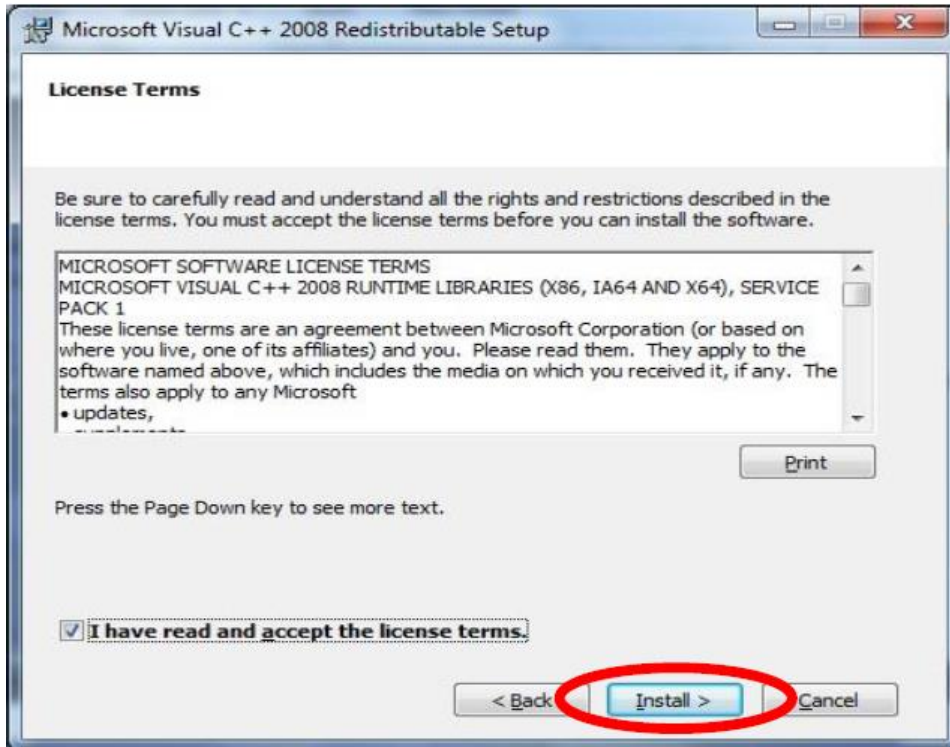
If a required C++ component is not installed on your system, you will have the option to install it now. Check the option “Install Visual C++ 2008 Redistributable Package”. Click “Next”.



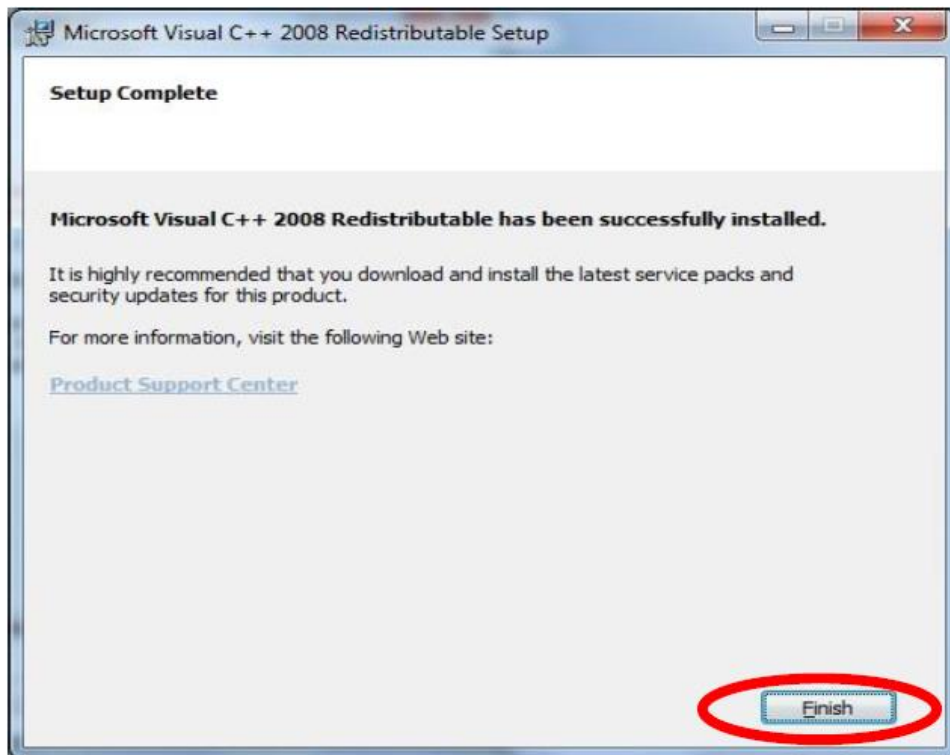
The Microsoft Visual C++ 2008 Redistributable installation wizard will begin. Click on “Next” to begin the installation.



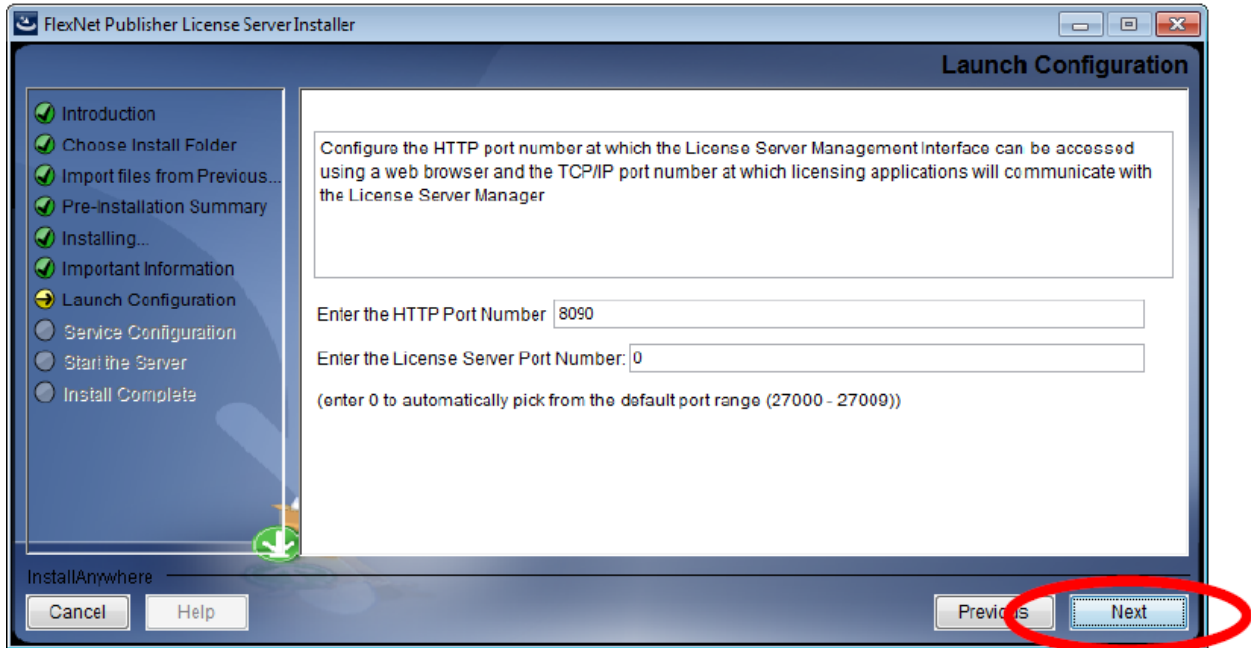
The license agreement will be displayed. If you agree to the licensing terms, check the box that says “I have read and accept the license terms”. Click “Next” to continue the installation. After the required files and components have been installed, the Finish dialog will appear.



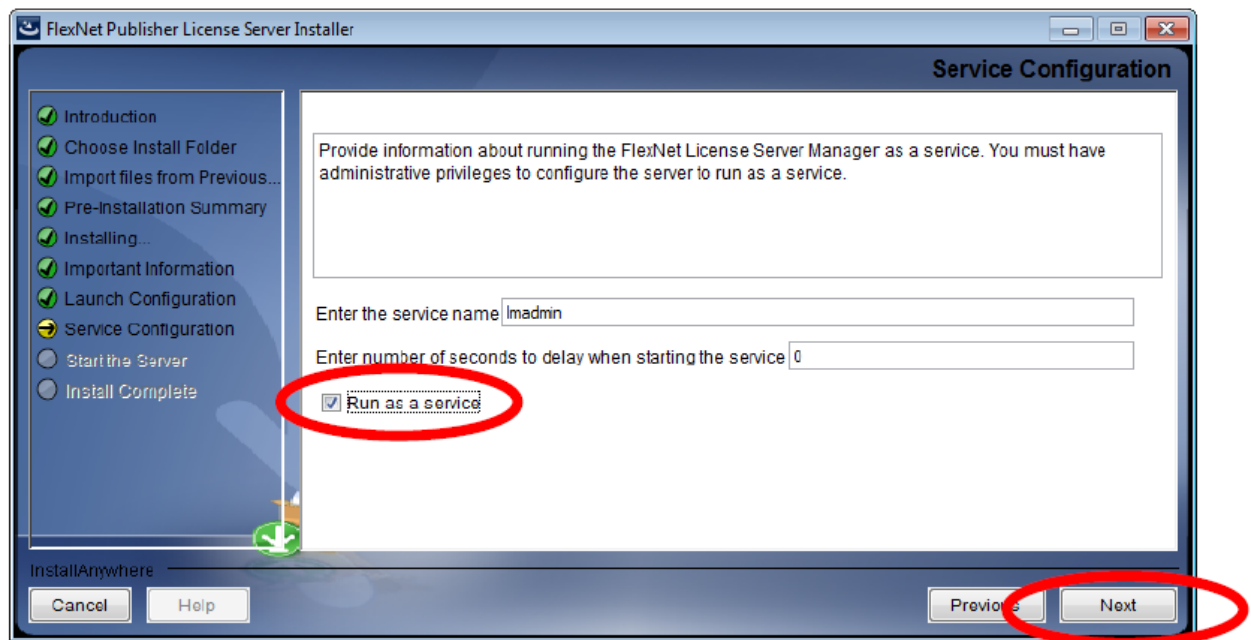
The Microsoft Visual C++ 2008 Redistributable installation process is now complete. The Flexera License Server installation will continue. Click on "Finish".



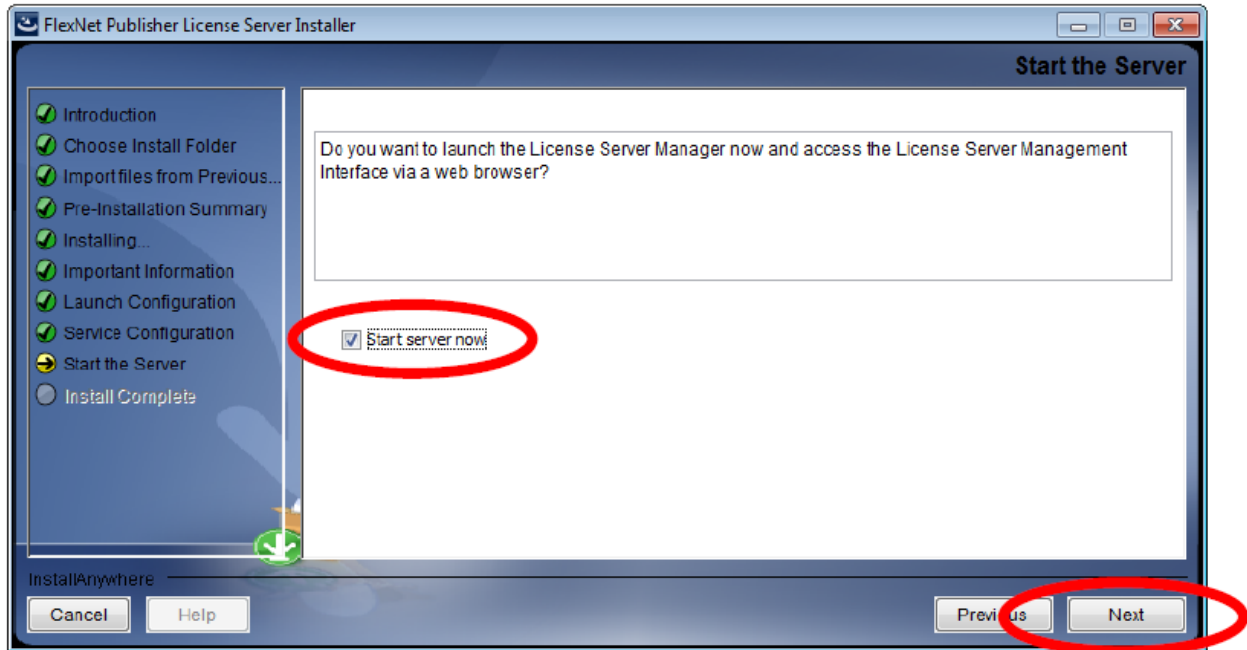
The HTTP Port configuration options will now appear. For most installations, the default values are sufficient. Click “Next”.



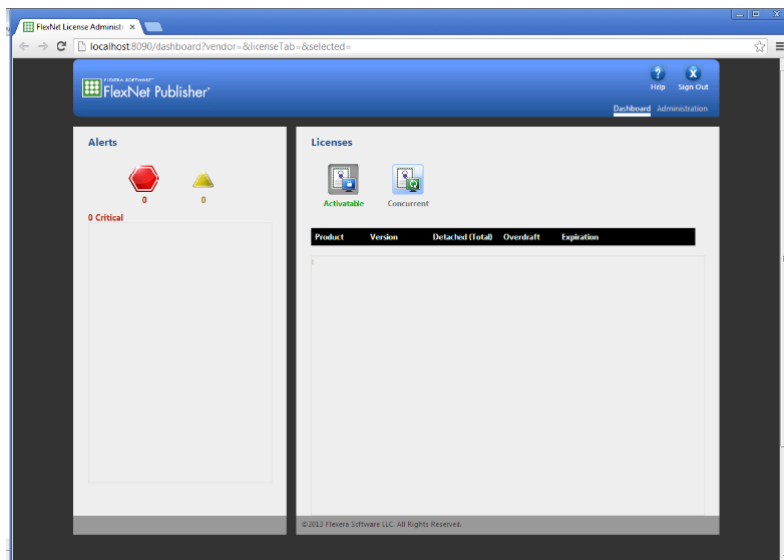
Now the Server Configuration options will be displayed. Check the “Run as a service” option. Click “Next”



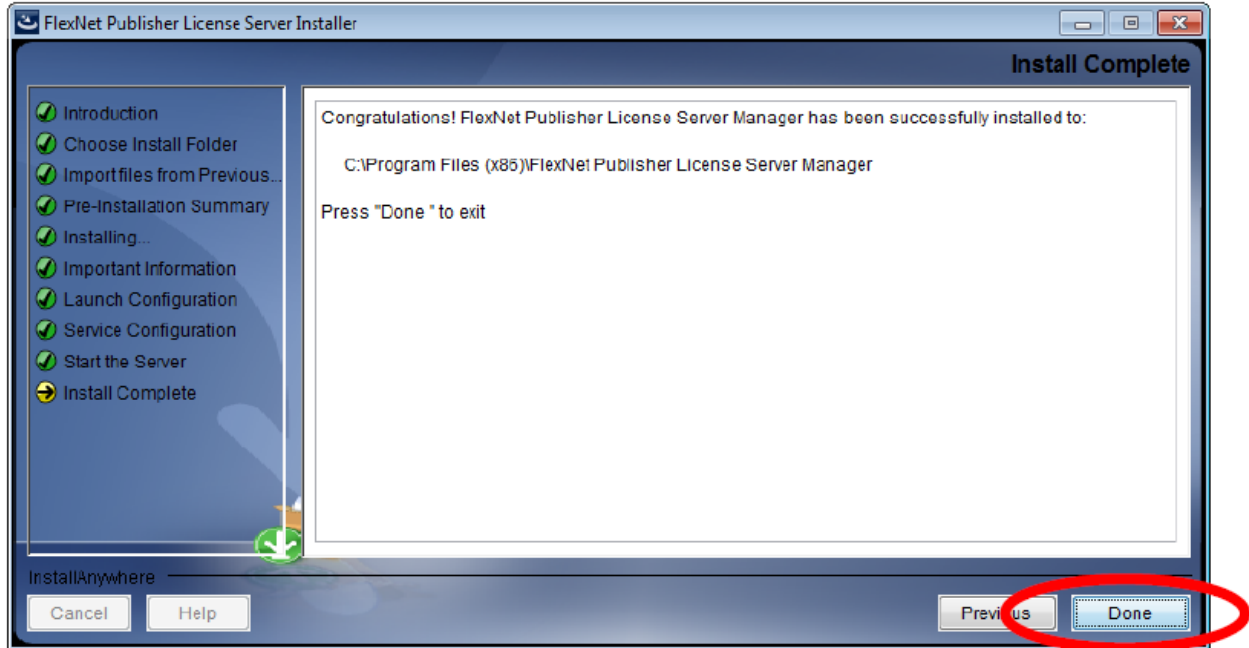
Check the “Start server now” option and click “Next”. The installer will attempt to start the licensing server.



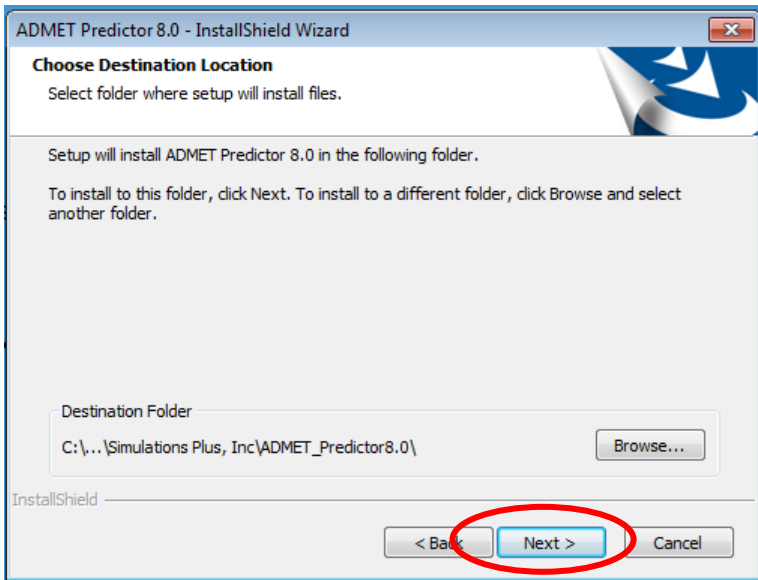
When the server starts, a browser window will open (below). You should see “FlexNet Publisher” in the top left corner. If a browser window did not open, the server may need to be started manually. A one-time reboot of your system after completing the ADMET Predictor installation will usually solve this. The server will start each time your machine boots up.



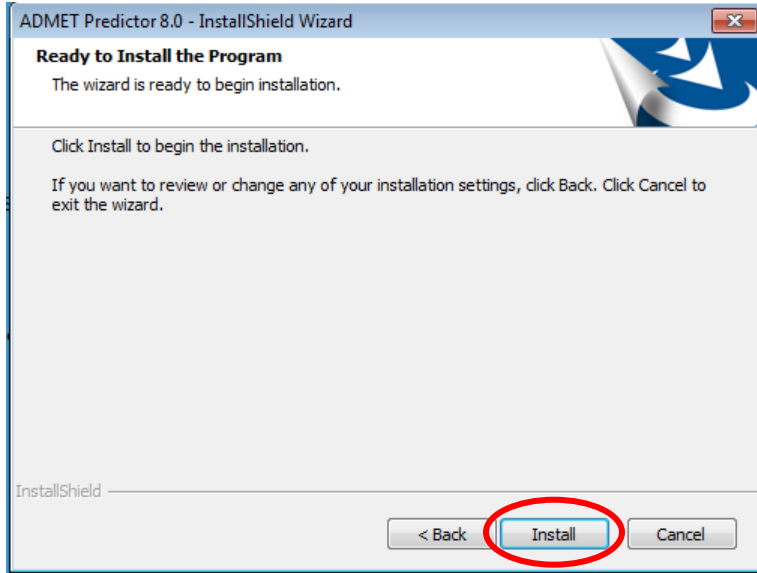
Click on “Done” to complete the Flexera License Server install.



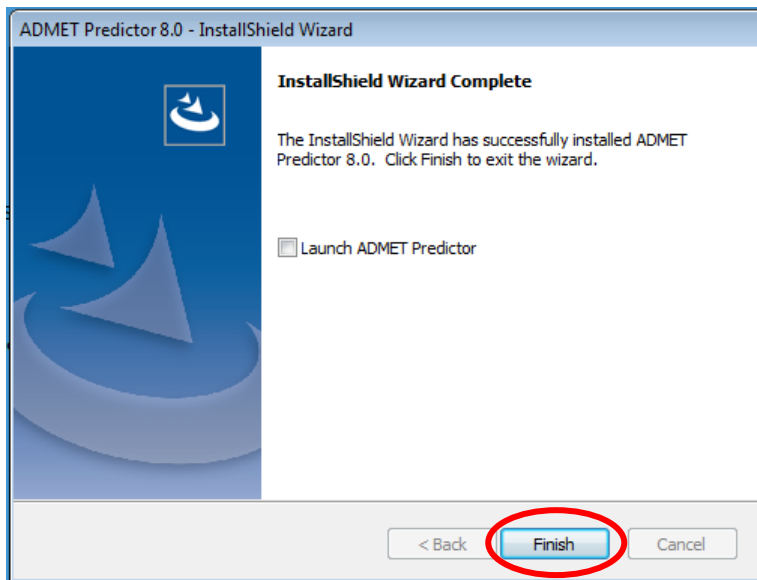
After the Flexera licensing system is installed, ADMET Predictor installation will begin. Select the installation directory for ADMET Predictor. Unless you have a specific need to install in a different directory, the default location is recommended. Click “Next”.



The installation has the information it needs to continue. Click “Install” to install ADMET Predictor on your machine. A progress bar will be displayed while ADMET Predictor installs the required files and components. When the installation is complete, the “Finished” dialog will be displayed.

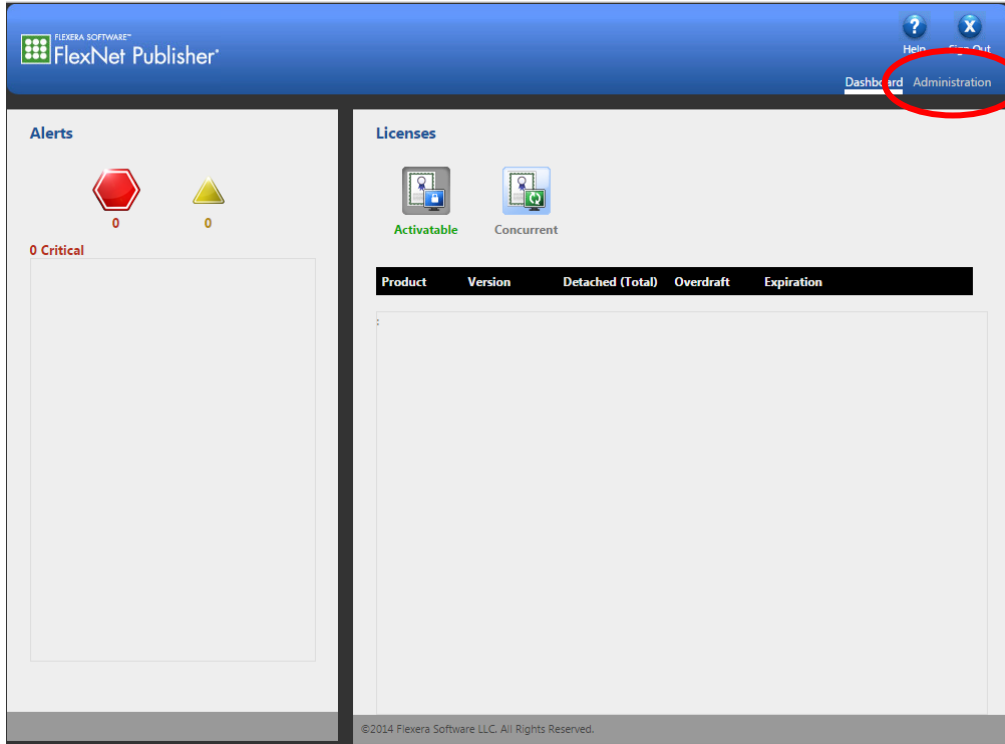


Click on “Finish” to complete the installation. ADMET Predictor is now installed on your machine. The next step in the process is to import the license file (LicenseFile.lic) into your Flexera license server.

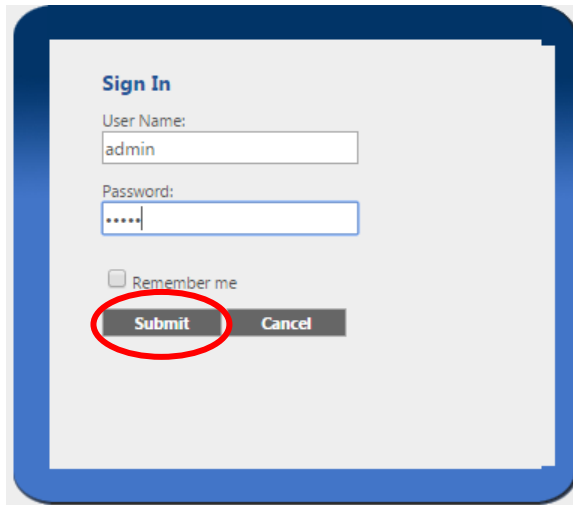


Importing the license file into Flexera

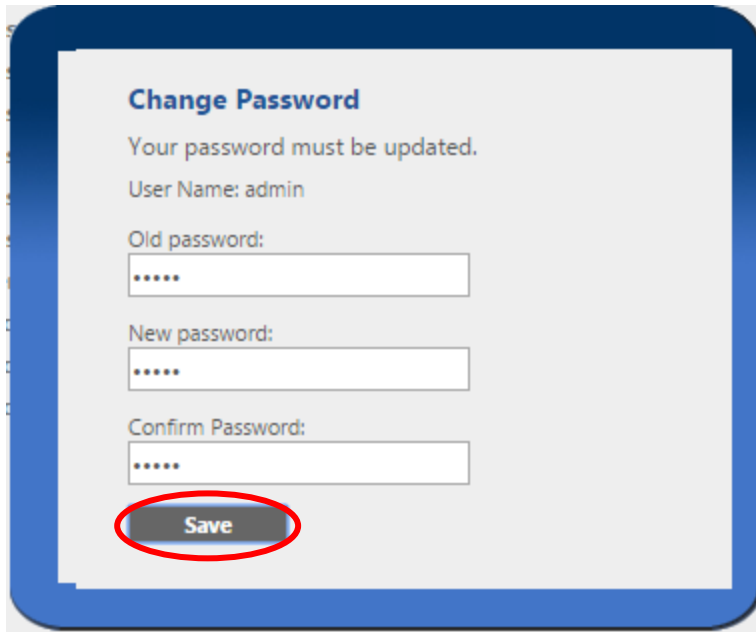
Open an internet browser such as Internet Explorer or Chrome. Type <http://localhost:8090> into the address window and hit the return key. The dialog box below will appear. Click on “Administration” in the upper right hand corner.



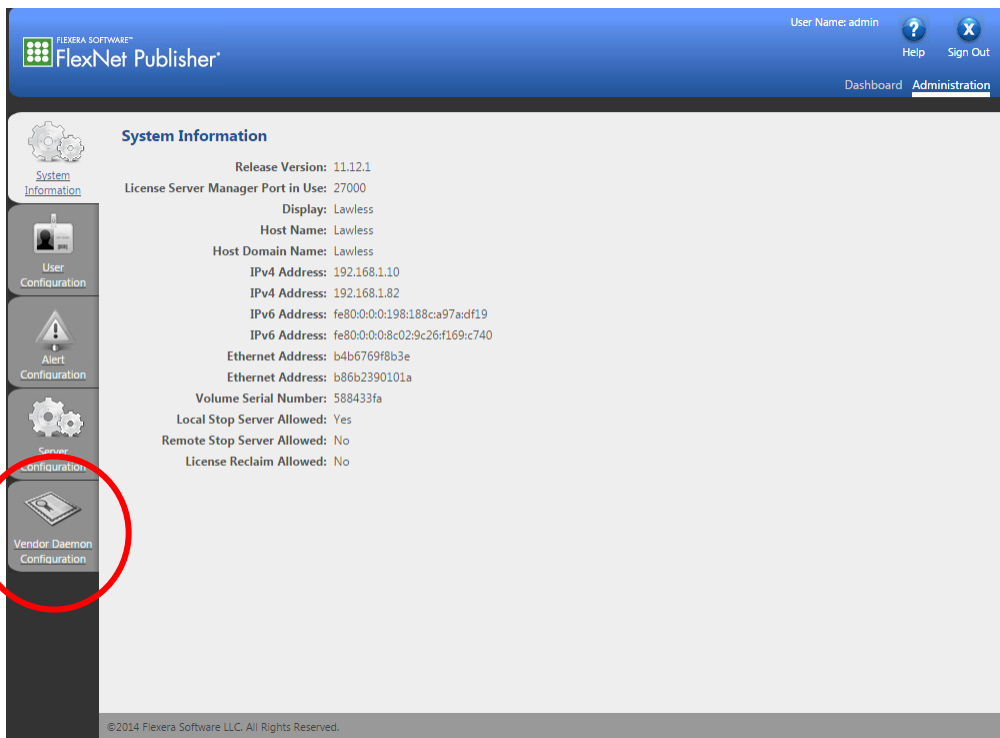
You will be prompted for the “User Name:” and “Password:”. Enter “admin” in both fields and click on submit.



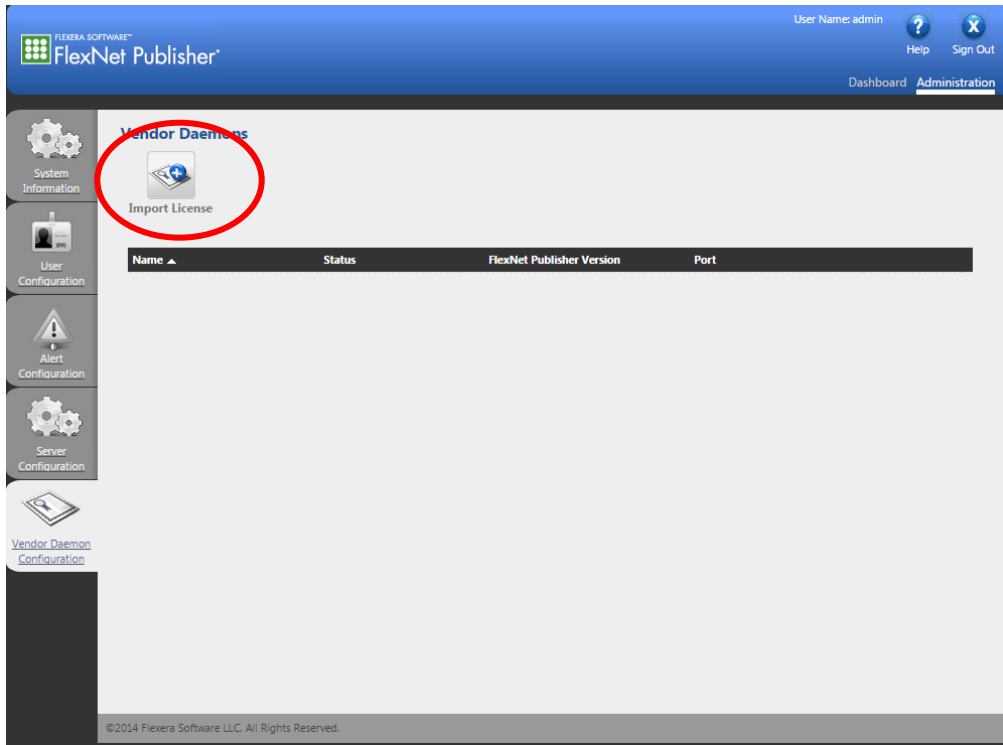
You will be prompted to change the password. We recommend that you continue to use “admin”. Thus, enter “admin” for all of the passwords. Then click “Save”, followed by “OK” on the ensuing dialog box.



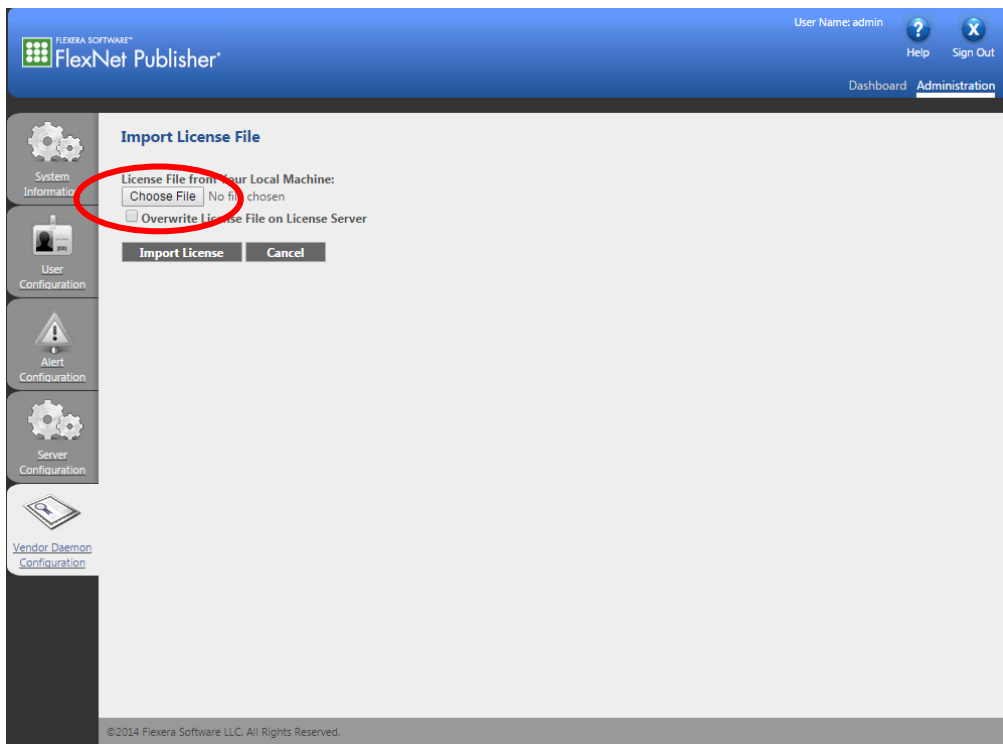
Click on the “Vendor Daemon Configuration” tab in the lower left hand corner.



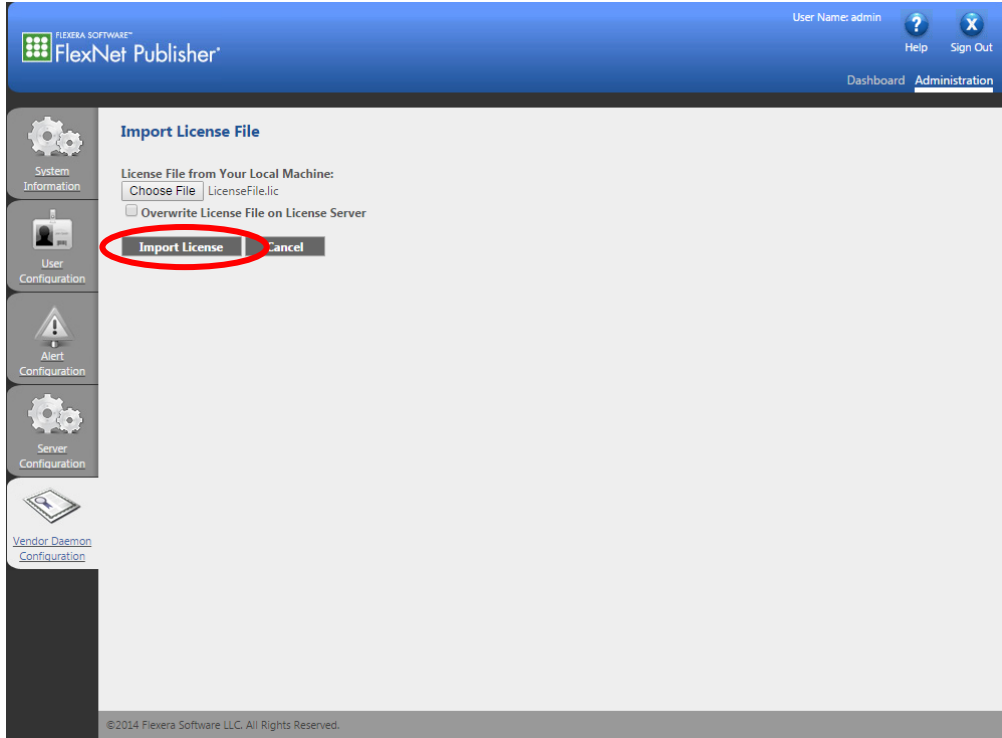
The dialog box below will now be displayed. Click on “Import License”.



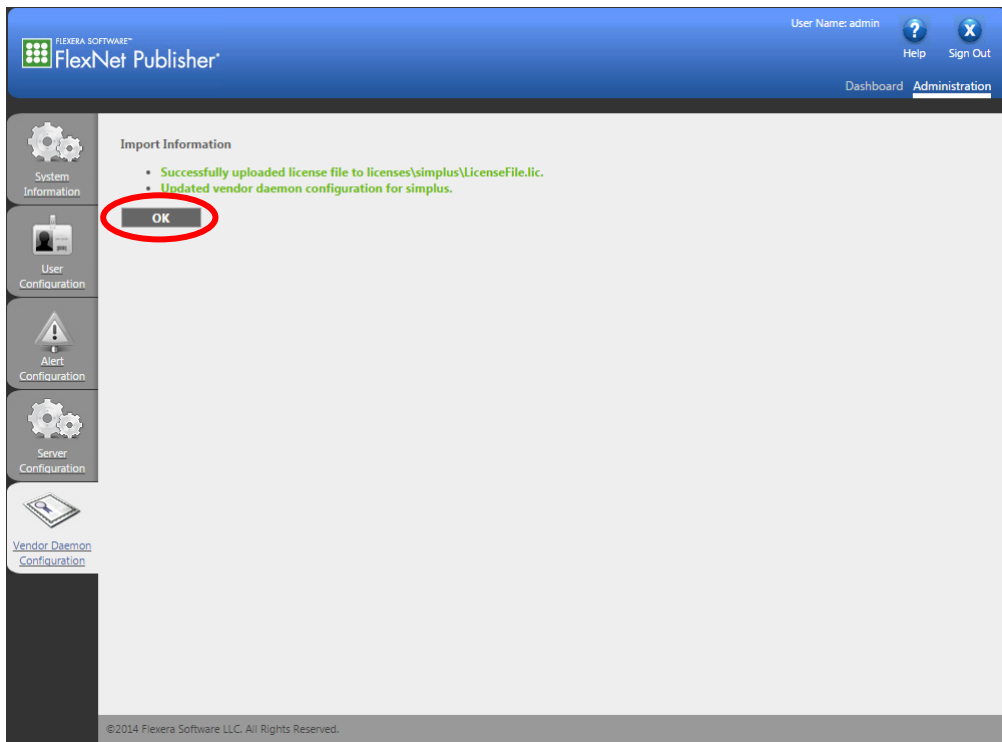
Click on “Choose File”. Navigate to the directory containing the “LicenseFile.lic” file that was emailed to you and select it.



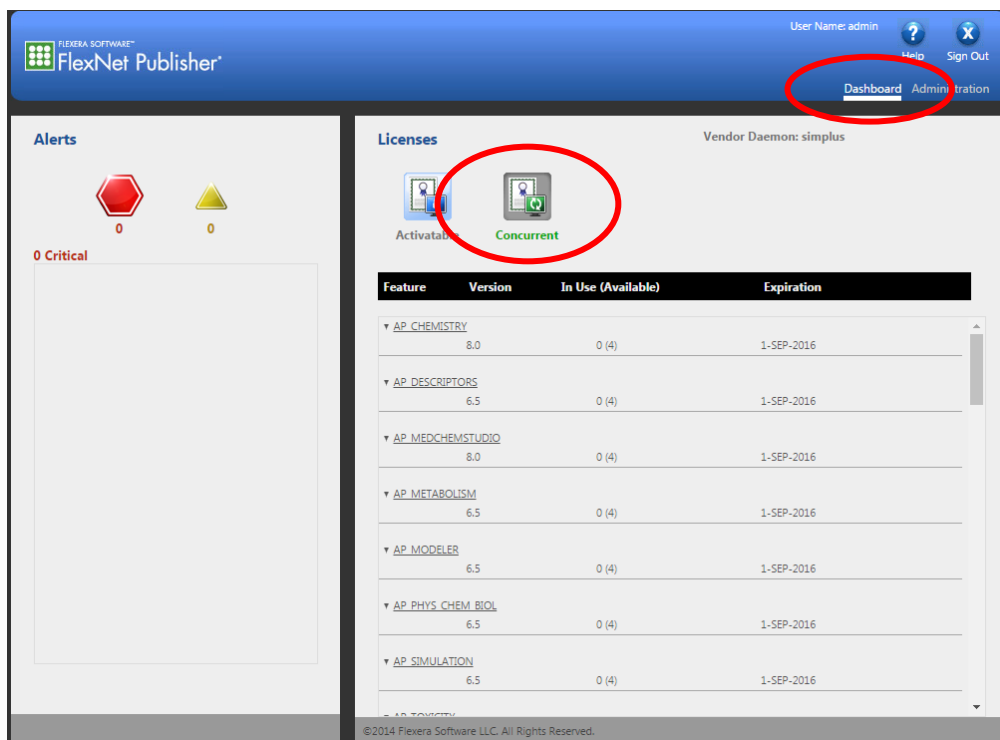
Next, click on “Import License”.



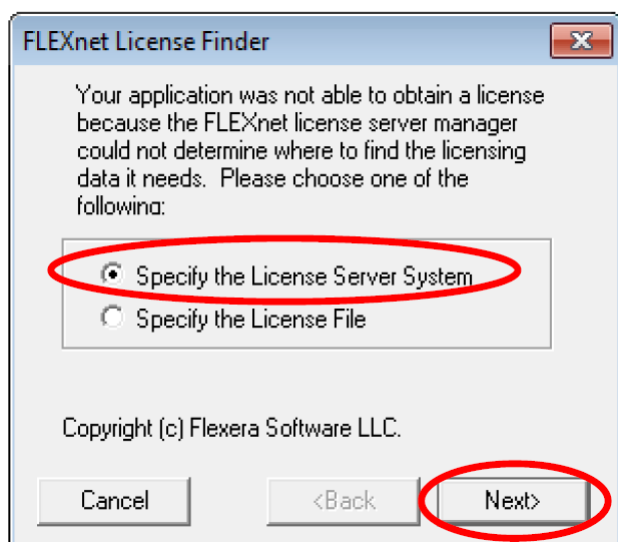
The dialog box below will be displayed if importing the license was successful. Click “OK”.



Click on “Dashboard” and then “Concurrent” to display modules that are licensed. This may take a few seconds to update.



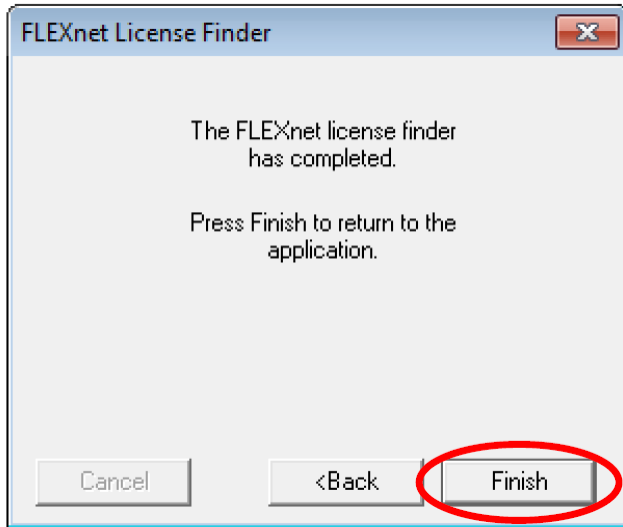
You can then close the internet browser. Starting ADMET Predictor will bring up the dialog box below. “Specify the License Server System” should already be selected, if not then please select it. Click on “Next>”.



Enter “localhost” and click on “Next>”.



Click on "Finish" to launch ADMET Predictor.



This information will be stored in the computer's registry so you will not see these prompts the next time that you start ADMET Predictor.