

## **Installation Instructions for ADMET Predictor® 10.0 Using a Local License**

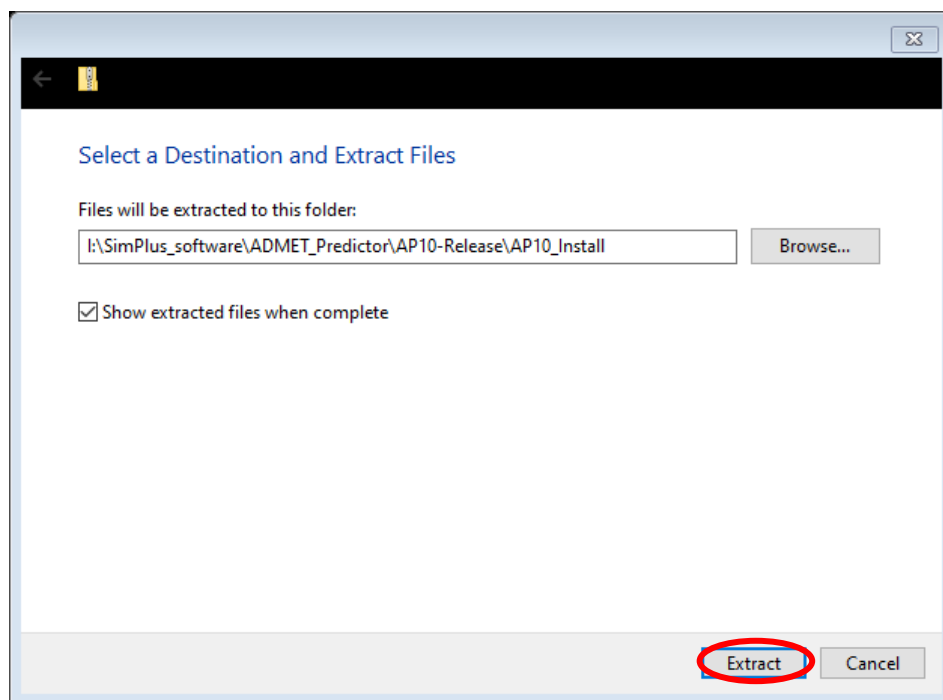
### **Before you begin**

In order to install ADMET Predictor, you must have Administrative privileges. These instructions assume the neither ADMET Predictor 10.0 nor the Flexera licensing system have been installed on the computer.

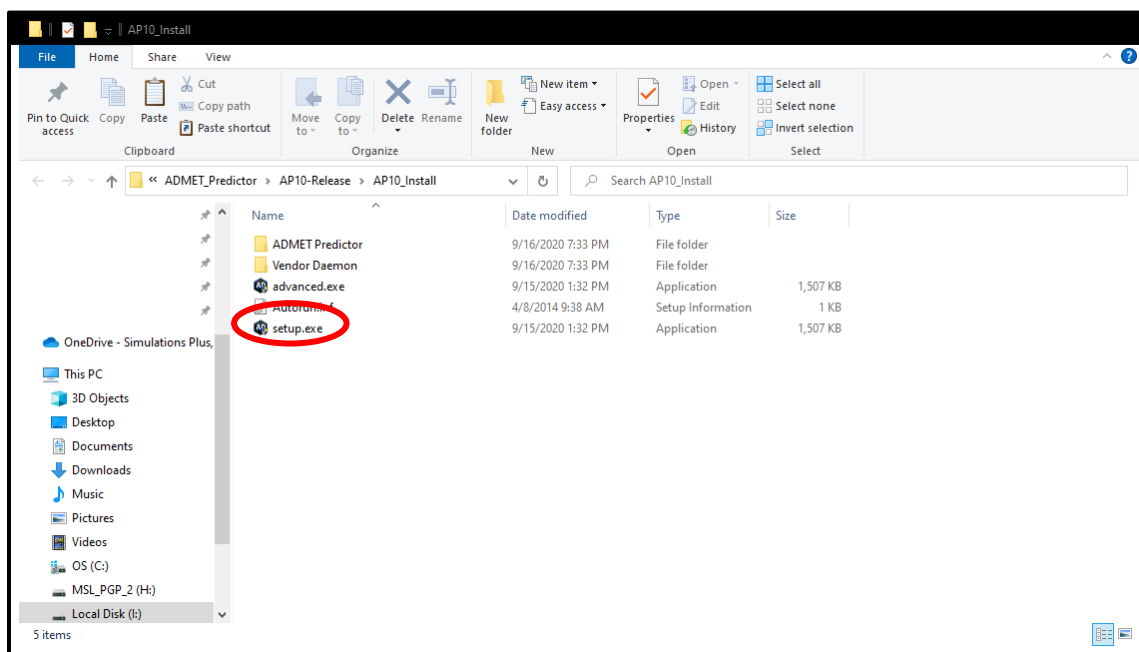
During the ADMET Predictor installation process, a file named SLP\_HOSTID\_Info.txt will be created on your desktop. This file needs to be emailed to [licensing@simulations-plus.com](mailto:licensing@simulations-plus.com) in order to create your license file. We will generate a license file (LicenseFile.lic) that is specific to your computer. The file will be emailed to you and needs to be imported into the Flexera licensing system in order to run the ADMET Predictor. The directions for importing the file are at the end of this document.

### **Installation**

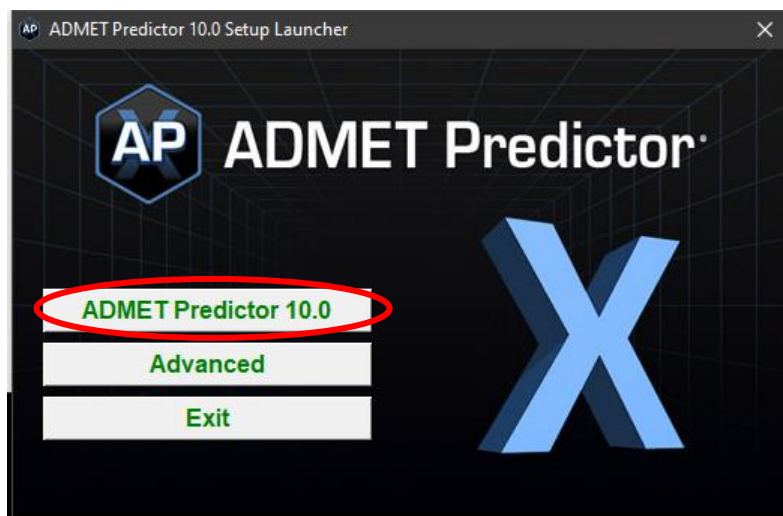
The first step in the process is to extract the files from the “AP10\_Install.zip” file. Right click on the “AP10\_Install.zip” file and select “Extract All...”. The dialog box below will appear. Accept the default destination folder and click on “Extract”.



In the “AP10\_Install” directory, double click on the “setup.exe” icon:

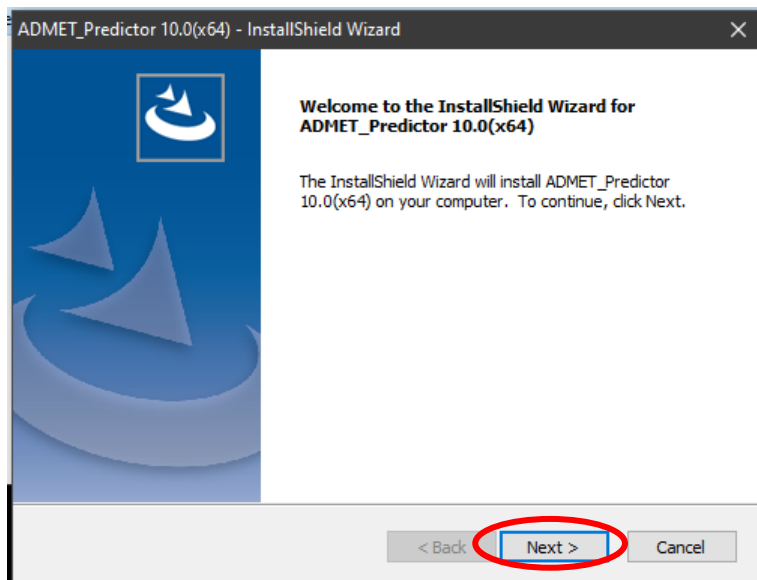


This will bring up the dialog box below. Click on the “ADMET Predictor 10.0” button.

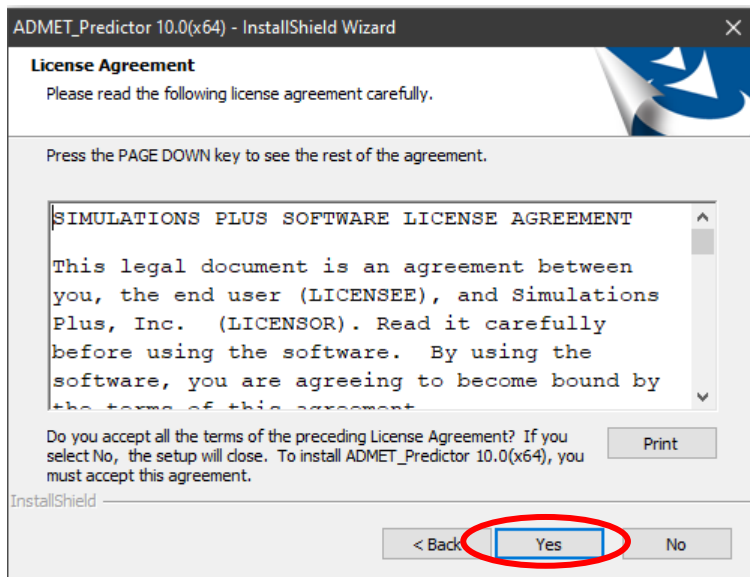


The program will install the “Microsoft Visual C++” redistribution package if the required dependencies do not exist on your system. Please install this package by clicking on the “Install” button.

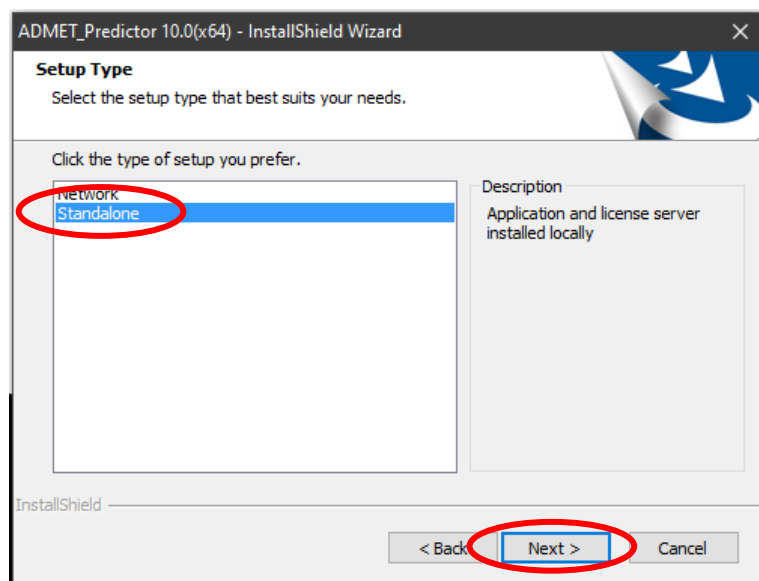
Once the dependencies have been installed, the installation process will continue. The ADMET Predictor installation wizard will begin with the dialog box below. Click “Next >”.



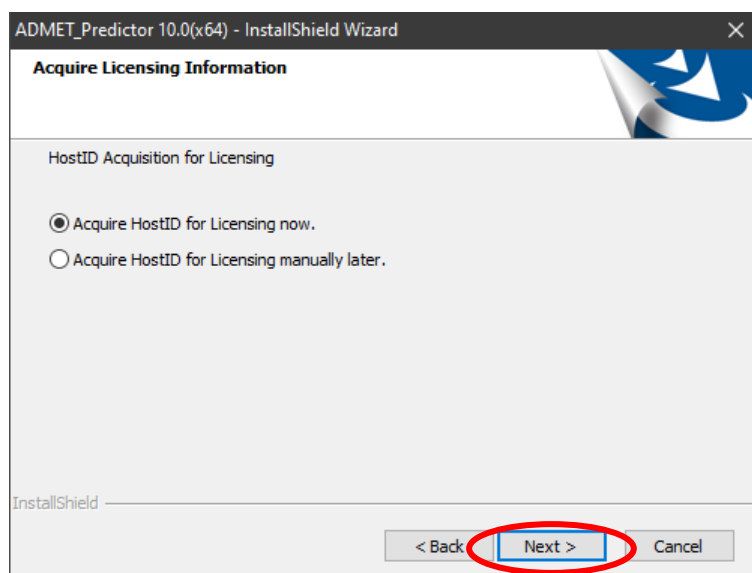
This will bring up the dialog box below. The license agreement will be displayed. If you agree to the licensing terms, click “Yes” to agree to the License Agreement.



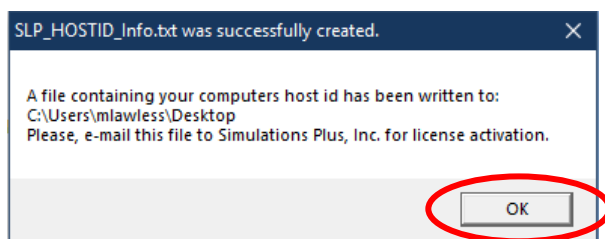
The dialog box below will then be displayed. Change to “Standalone” and click “Next”.



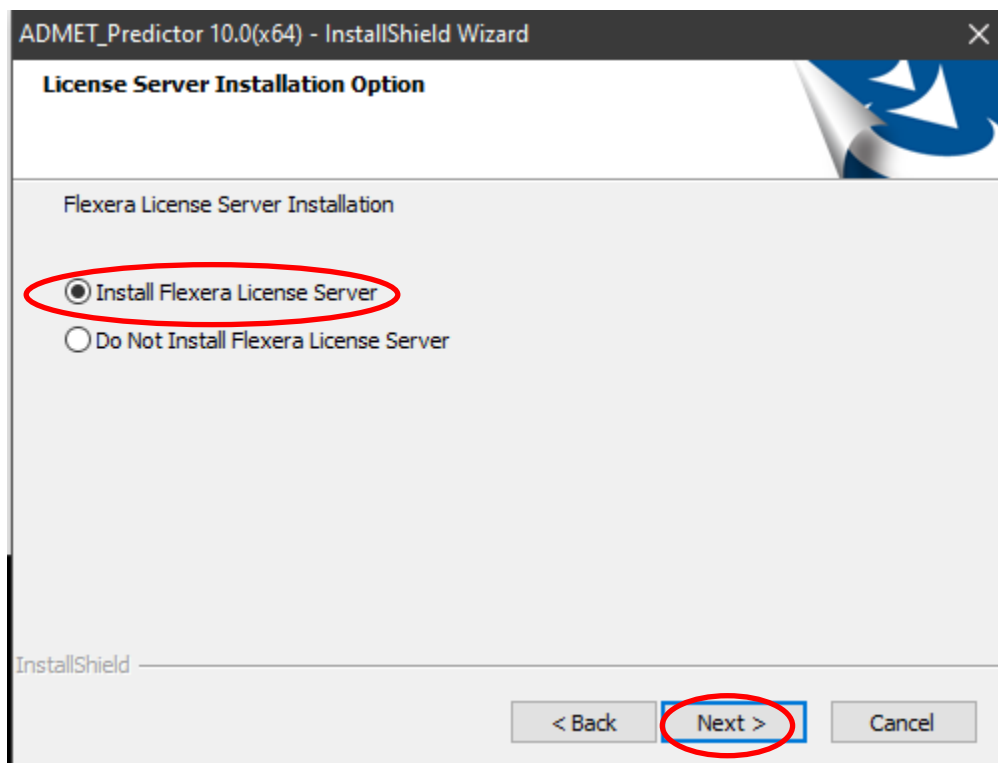
The dialog box below will then be displayed. Make sure that “Acquire HostID for Licensing now.” is selected. Then click “Next”.



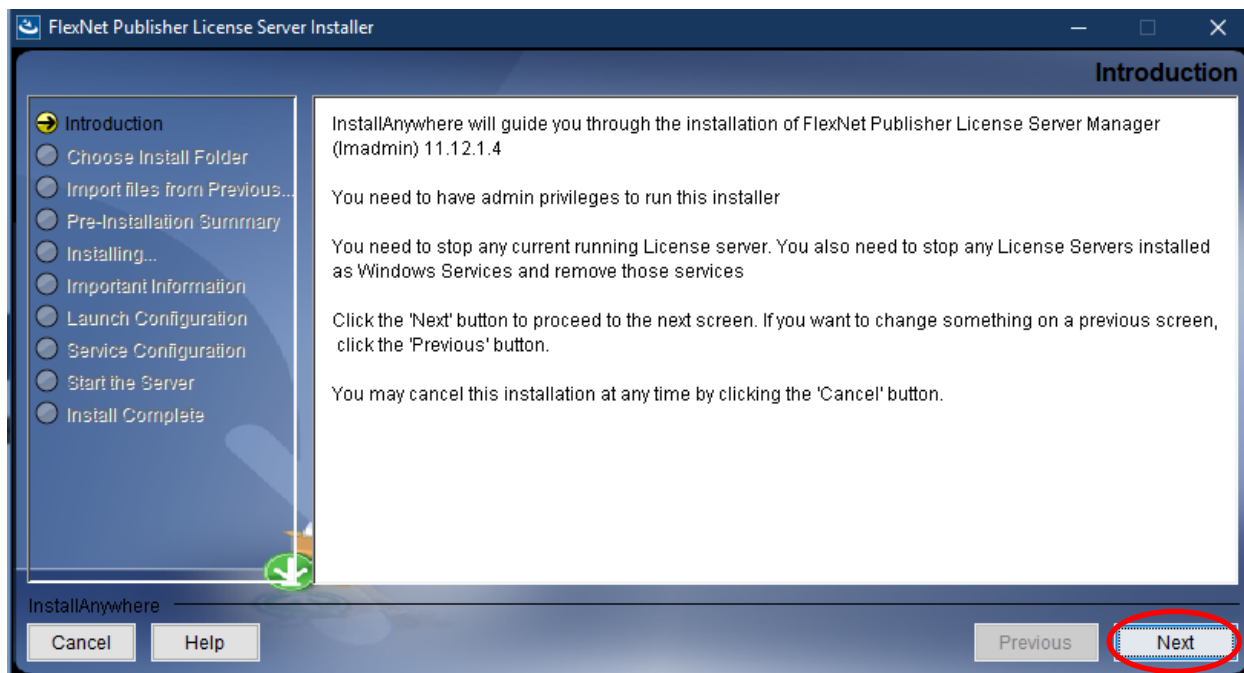
The message below indicates that the SLP\_HOSTID\_Info.txt file has been created. Please email this file to Simulations Plus ([licensing@simulations-plus.com](mailto:licensing@simulations-plus.com)). We will then generate a license file (LicenseFile.lic) for you. The license file will need to be imported into the Flexera licensing server. The directions for importing the file are the at the end of this document.



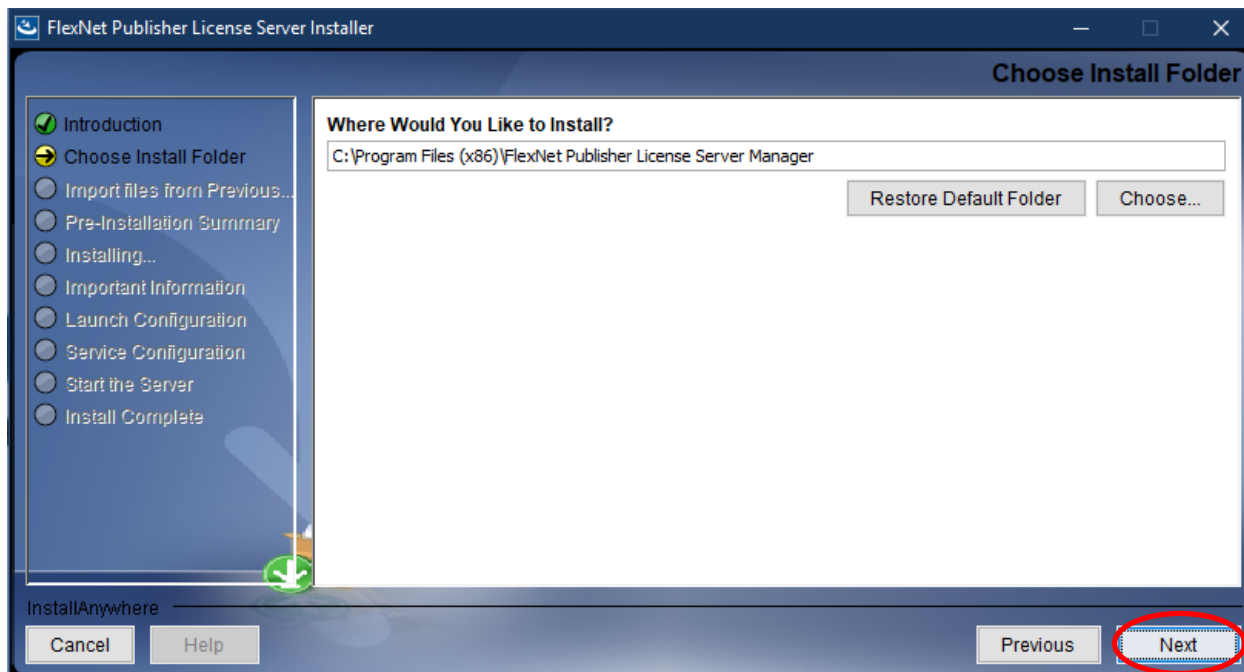
The dialog box below will then be displayed. Please select “Install the Flexera License Server” and then click on “Next>”.



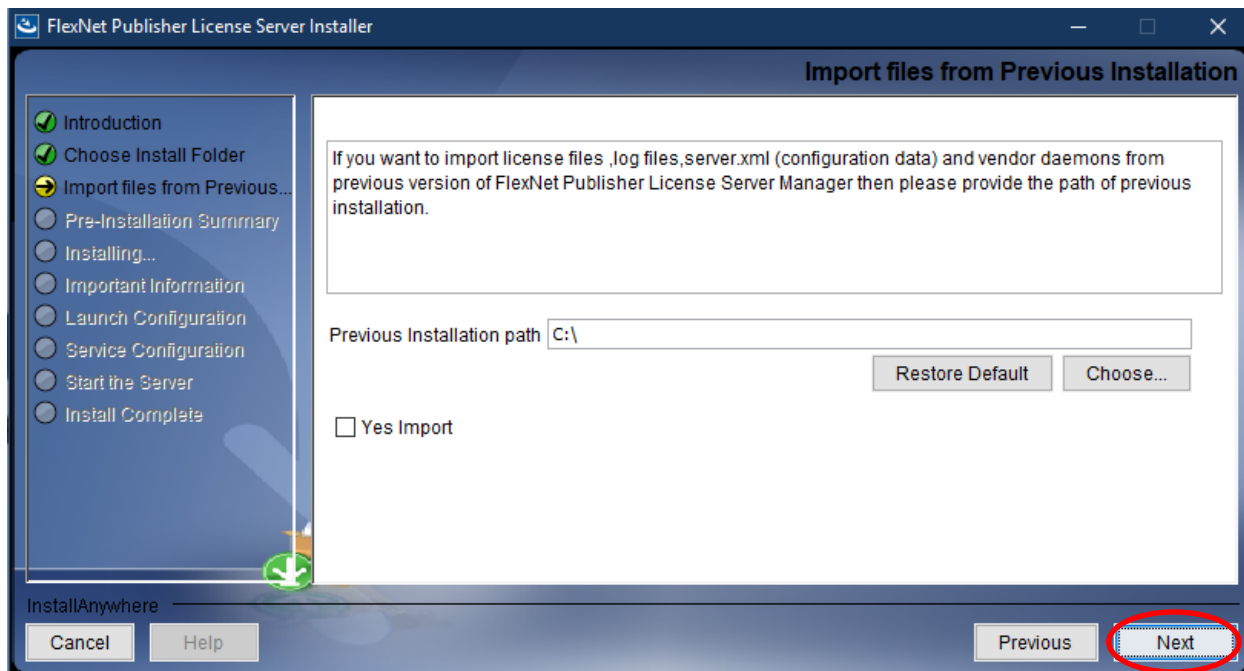
The dialog box below will be displayed. Click “Next” to continue.



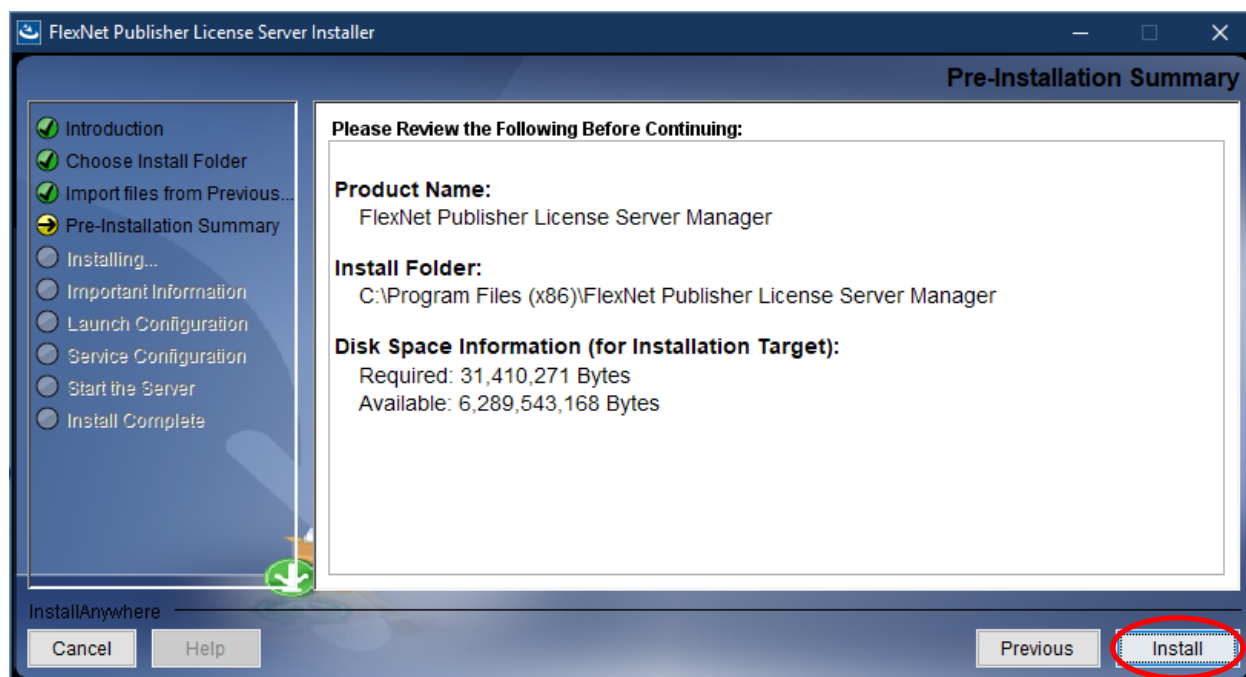
Now you will be presented with an option to select the installation folder. Unless there is a specific need to change the location, the default location is recommended. Click “Next”.



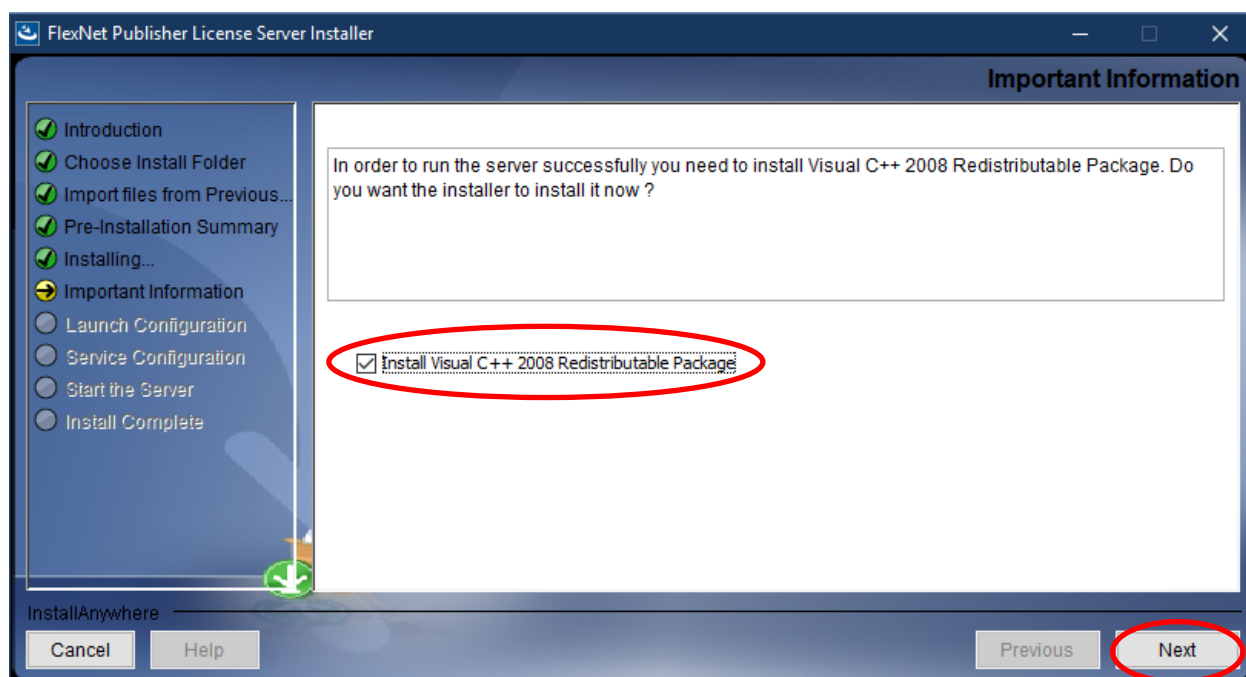
Click “Next” for the dialog box below:



The installer has the information needed to begin installing files. Click the “Install” button to continue.



Check the option “Install Visual C++ 2008 Redistributable Package”. Click “Next”.

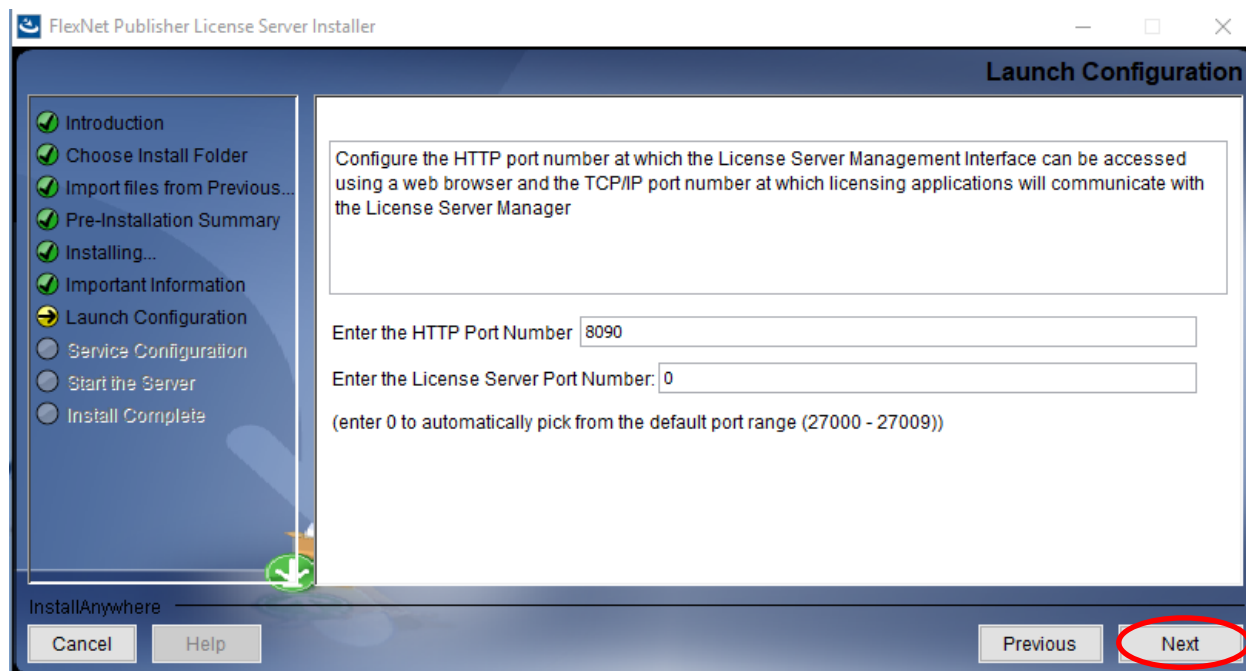


The Microsoft Visual C++ 2008 Redistributable installation wizard will begin. Click “Next” to continue the installation. After the required files and components have been installed, the Finish

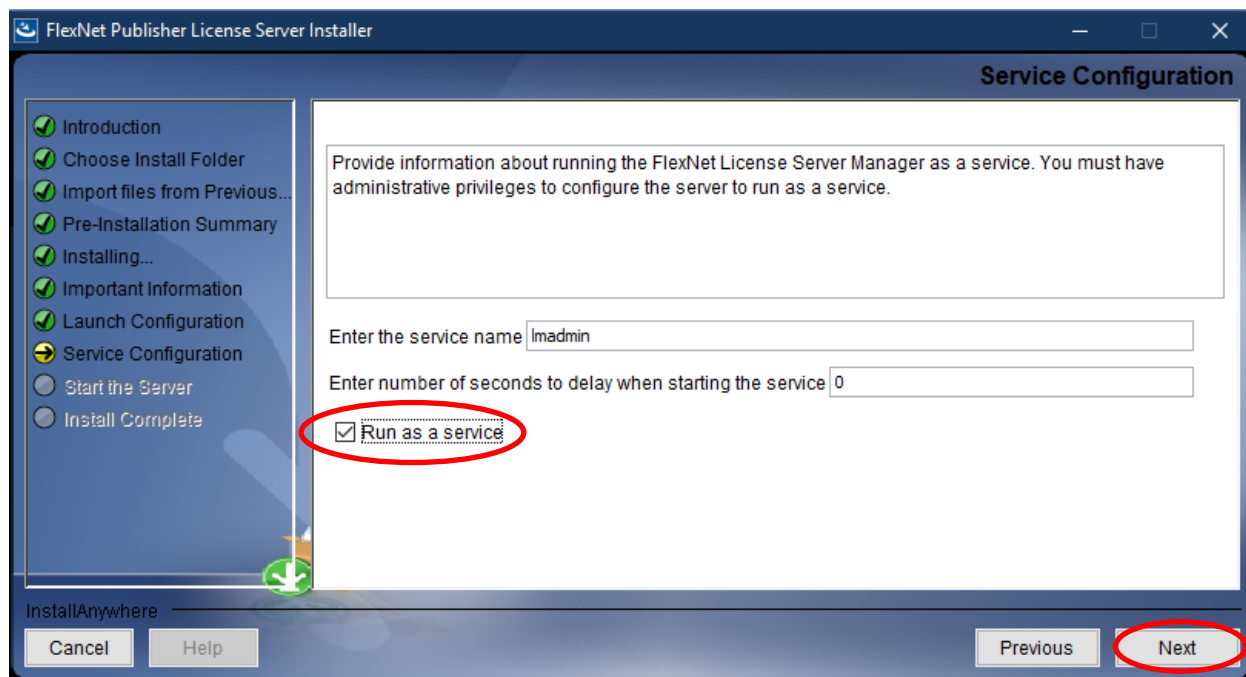


dialog will appear. The Microsoft Visual C++ 2008 Redistributable installation process is now complete. The Flexera License Server installation will continue. Click on “Finish”.

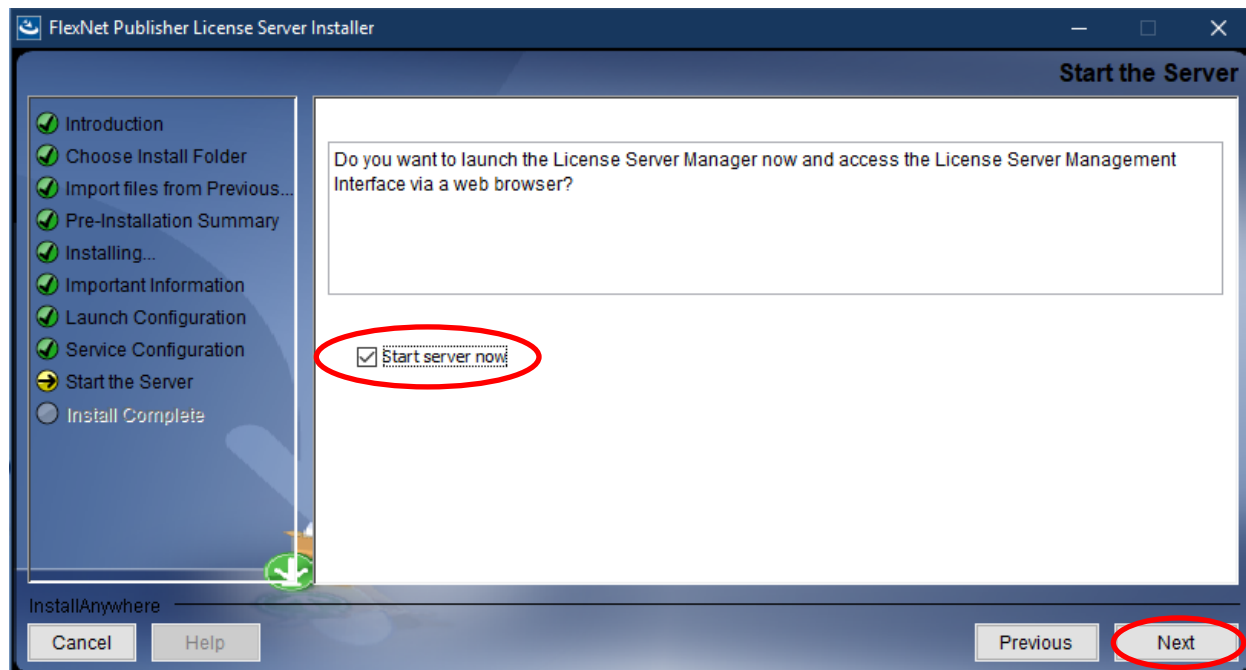
The HTTP Port configuration options will now appear. For most installations, the default values are sufficient. Click “Next”.



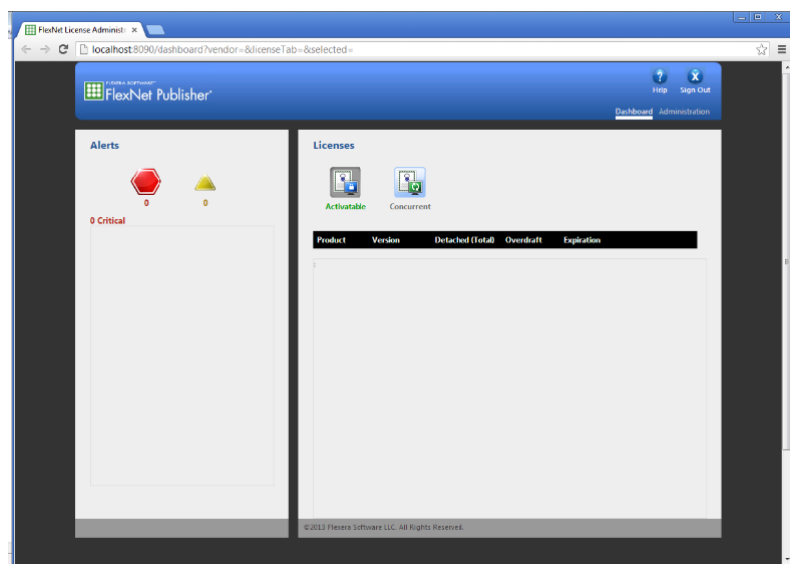
Now the Server Configuration options will be displayed. Check the “Run as a service” option. Click “Next”



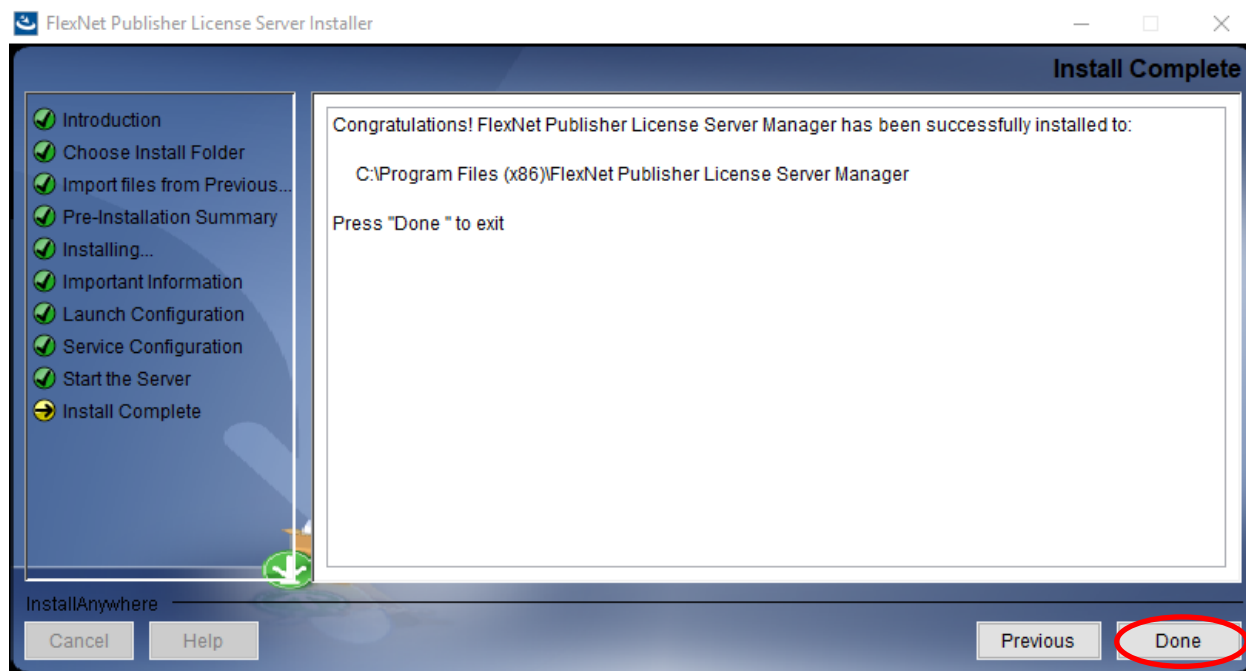
Check the “Start server now” option and click “Next”. The installer will attempt to start the licensing server.



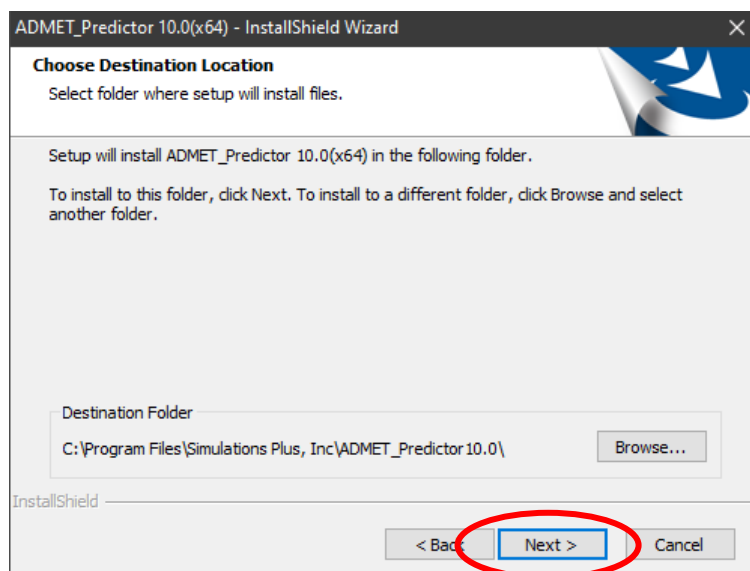
When the server starts, a browser window will open (below). You should see “FlexNet Publisher” in the top left corner. If a browser window does not open or if it cannot connect to the server then the server may need to be started manually. A one-time reboot of your system after completing the ADMET Predictor installation will usually solve this. The server will start each time your machine boots up.



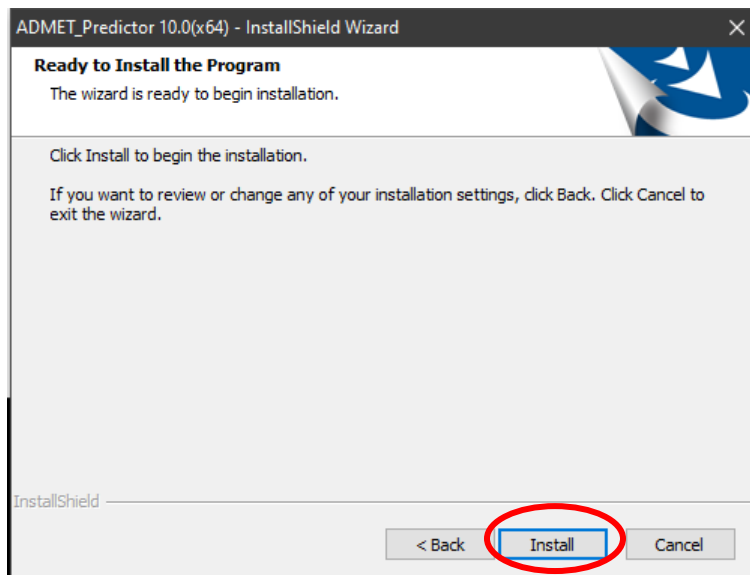
Click on “Done” to complete the Flexera License Server install.



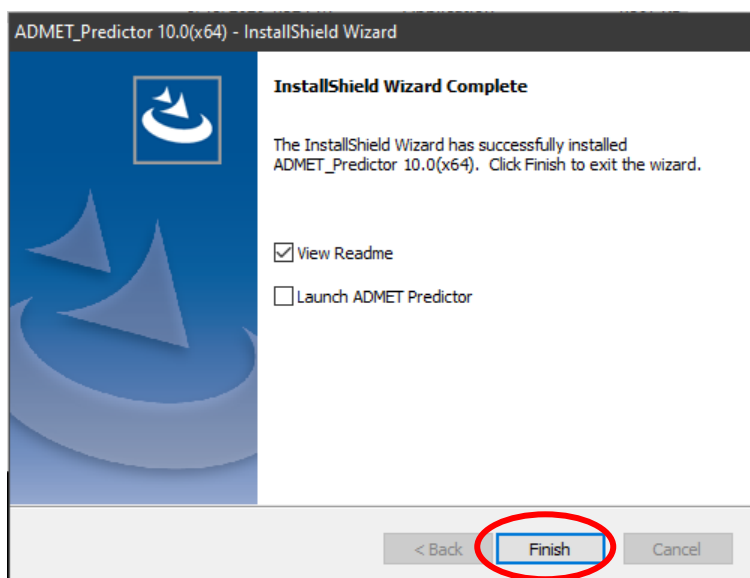
After the Flexera licensing system is installed, ADMET Predictor installation will begin. Select the installation directory for ADMET Predictor. Unless you have a specific need to install in a different directory, the default location is recommended. Click “Next”.



The installation has the information it needs to continue. Click “Install” to install ADMET Predictor on your machine. A progress bar will be displayed while ADMET Predictor installs the required files and components.



The dialog box below will be displayed, once the installation is finished. We generally recommend reading the “Readme” file because it contains information about the current release version. If this is a “fresh” installation of ADMET Predictor then the license file hasn’t been imported into the Flexera licensing system. Thus, “Launch ADMET Predictor” should be “unchecked”. Then click on “Finish” to complete the installation.

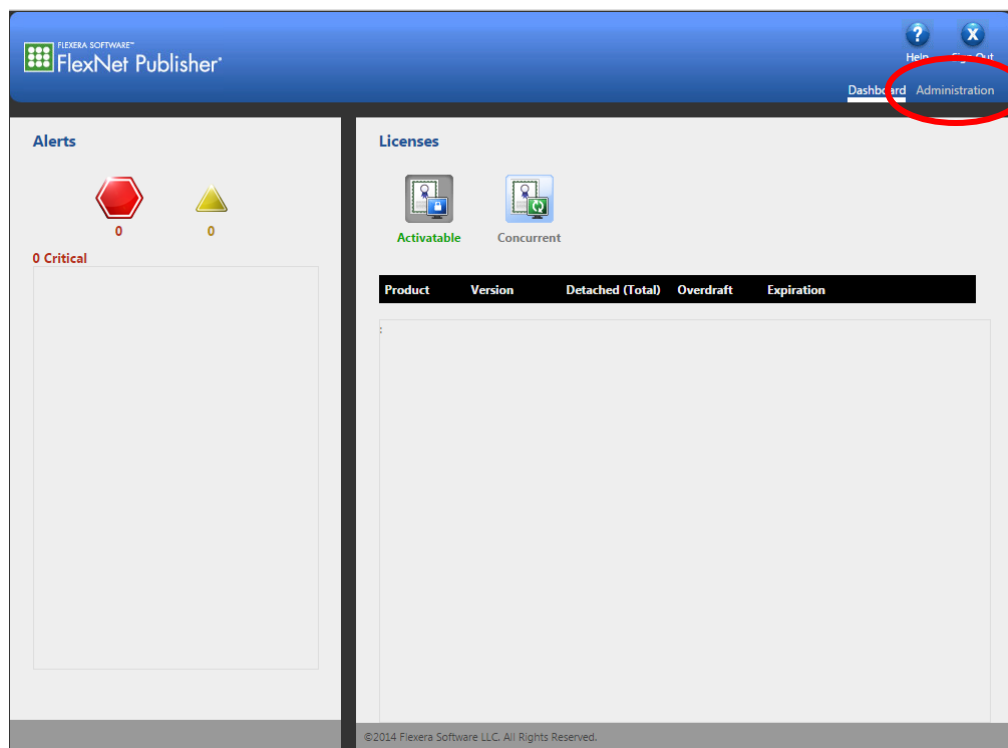


ADMET Predictor 10.0 is now installed on your machine.

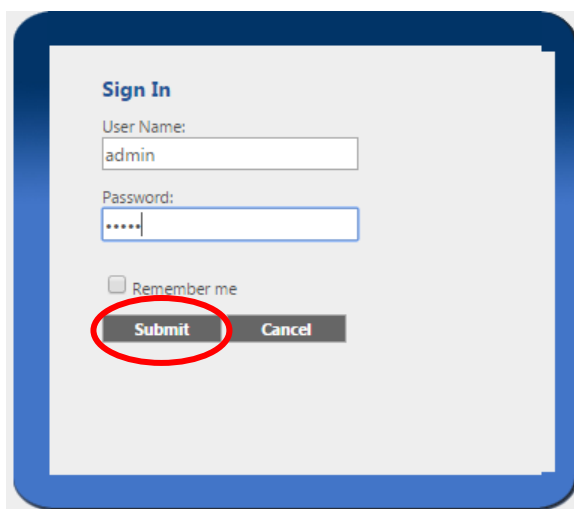
### **Importing the license file into Flexera**

The “lmadmin” service must be running in order to start the Flexera graphical user interface. Use “Windows + R key”, type “services.msc”, and then click on the “OK” button to start the services interface. Scroll to “lmadmin” and make sure that it is started. If not then start the server by right clicking on lmadmin and select “Start”.

Open an internet browser such as Internet Edge or Chrome. Type <http://localhost:8090> into the address window and hit the return key. The dialog box below will appear. Click on “Administration” in the upper right hand corner.

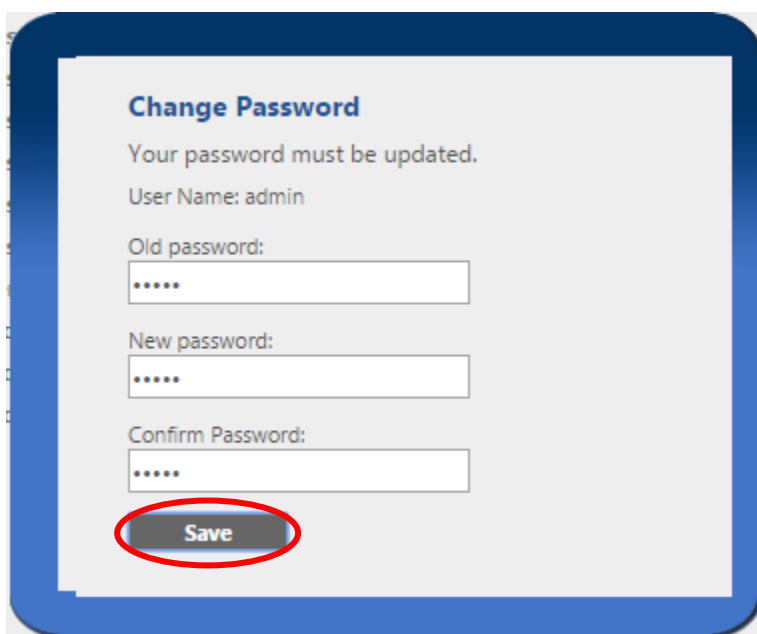


You will be prompted for the “User Name:” and “Password:”. Enter “admin” in both fields and click on submit.



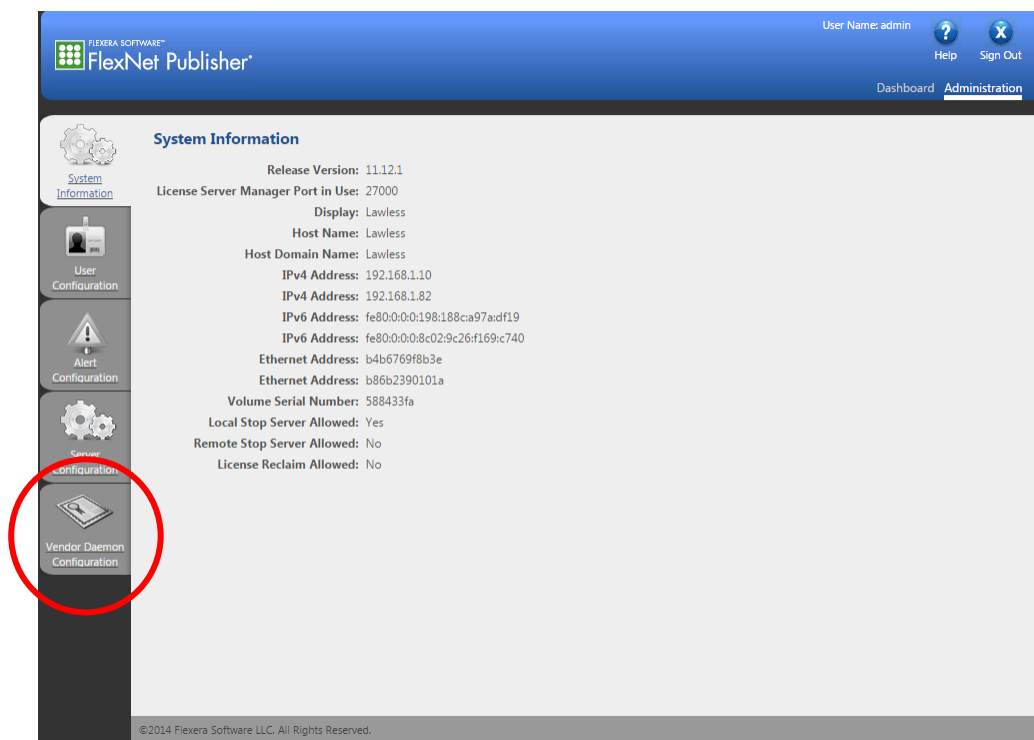
A "Sign In" dialog box with a blue border. It contains a "User Name:" field with "admin" entered, a "Password:" field with five dots, a "Remember me" checkbox, and two buttons: "Submit" (circled in red) and "Cancel".

You will be prompted to change the password. We recommend that you continue to use “admin”. Thus, enter “admin” for all of the passwords. Then click “Save”, followed by “OK” on the ensuing dialog box.

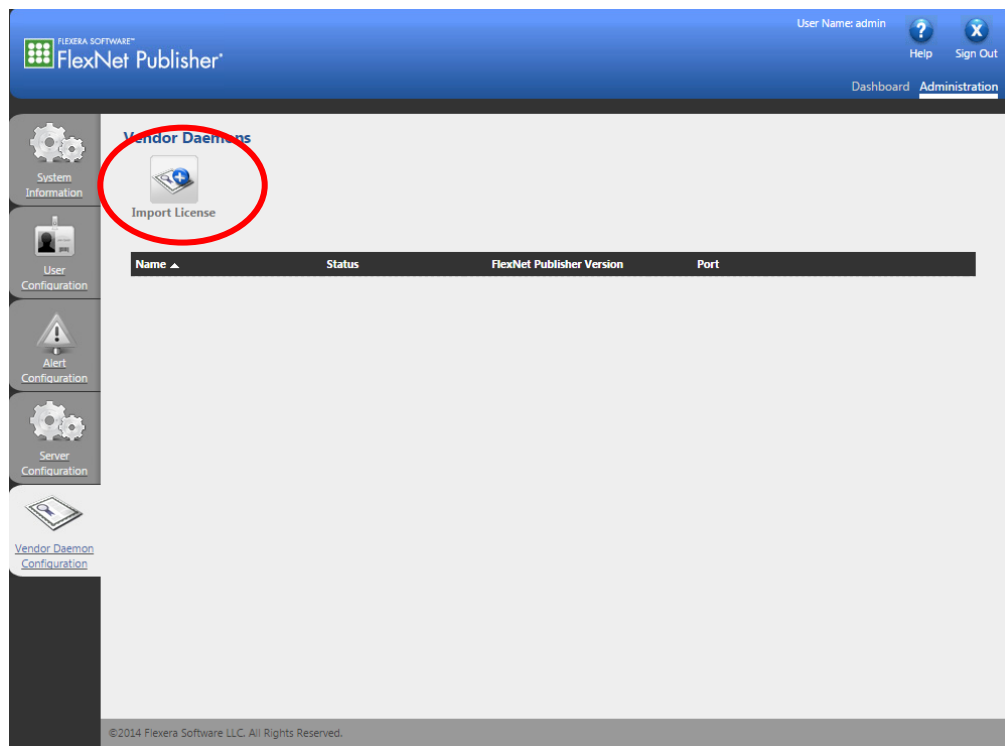


A "Change Password" dialog box with a blue border. It contains the text "Your password must be updated.", "User Name: admin", and three password fields: "Old password:", "New password:", and "Confirm Password:", each with five dots. A "Save" button (circled in red) is at the bottom.

Click on the “Vendor Daemon Configuration” tab in the lower left hand corner.

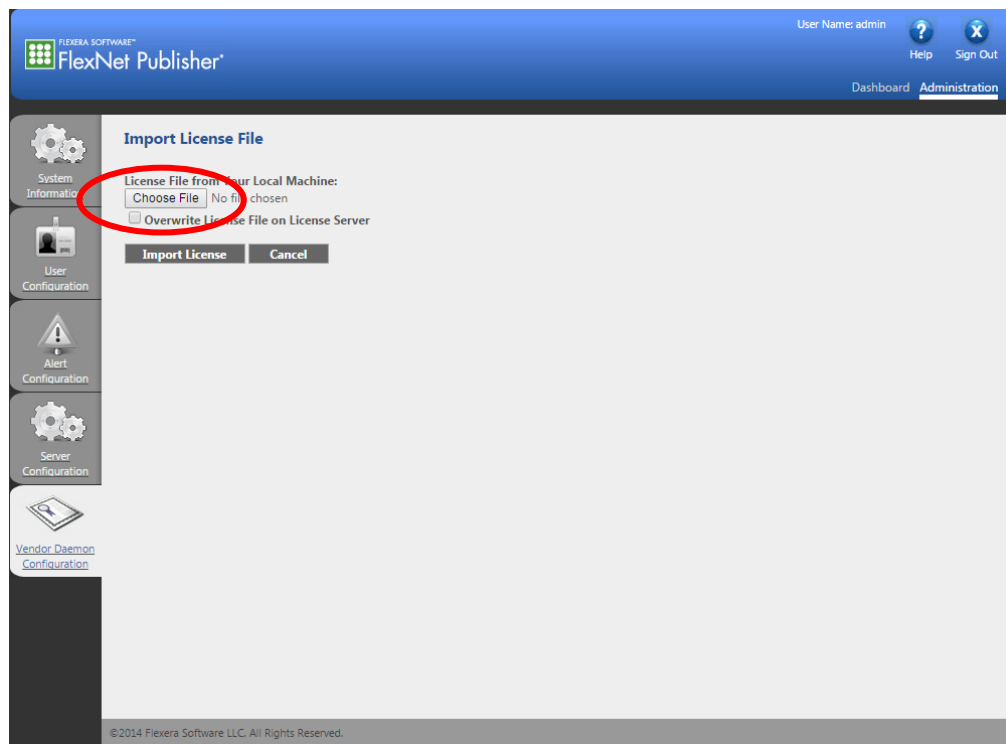


The dialog box below will now be displayed. Click on “Import License”.

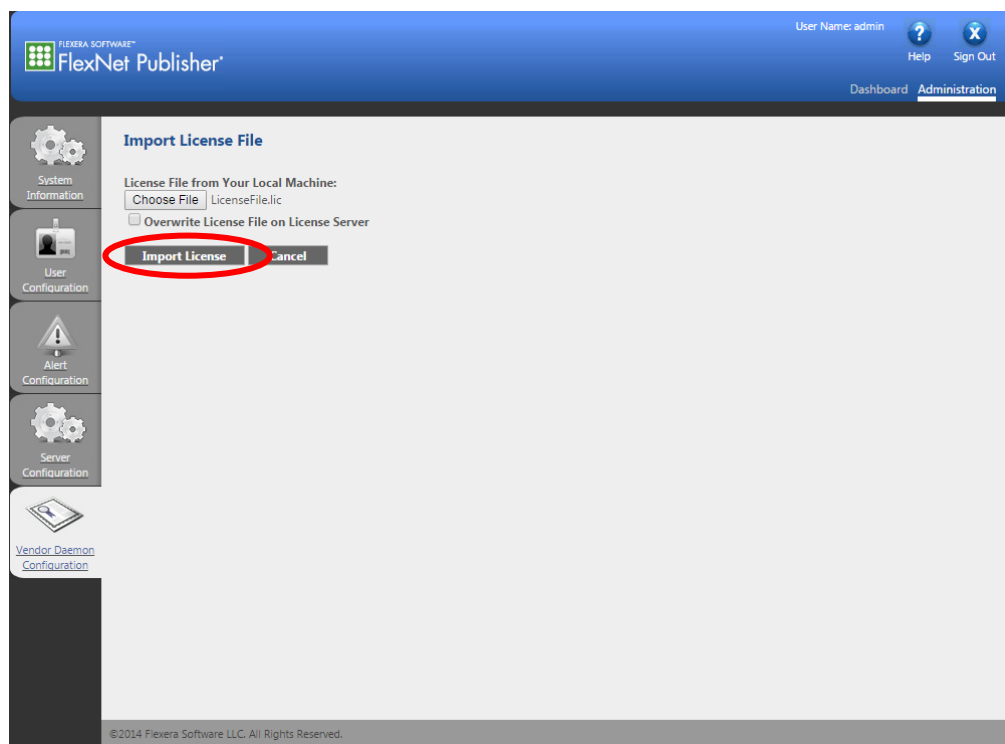




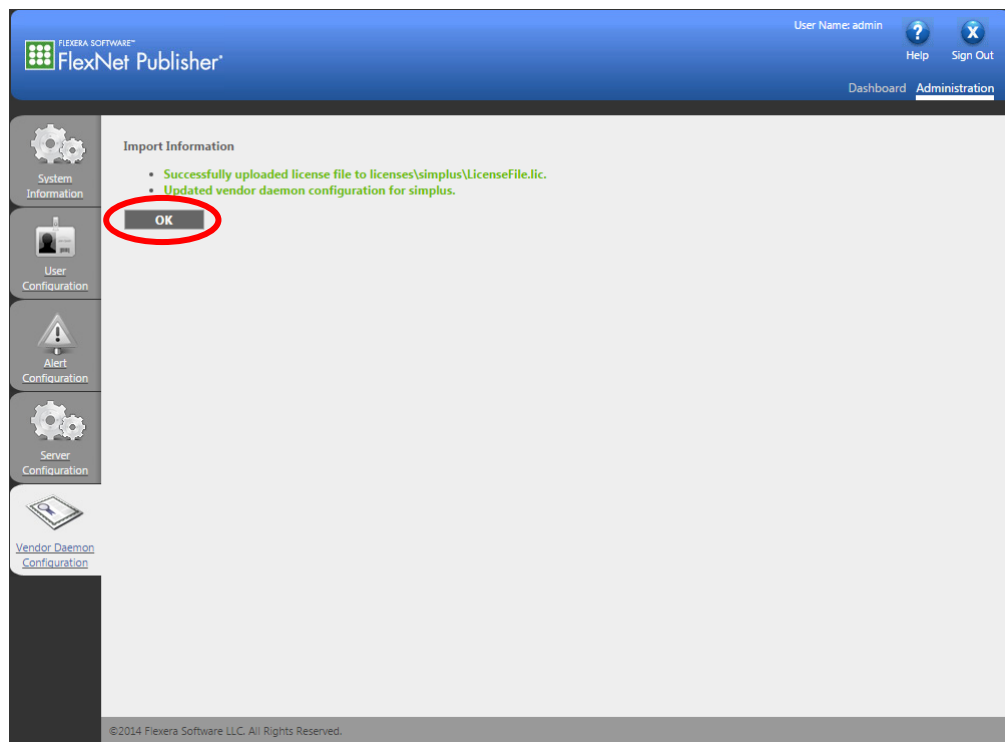
Click on “Choose File”. Navigate to the directory containing the “LicenseFile.lic” file that was emailed to you and select it.



Next, click on “Import License”.



The dialog box below will be displayed if importing the license was successful. Click “OK”.

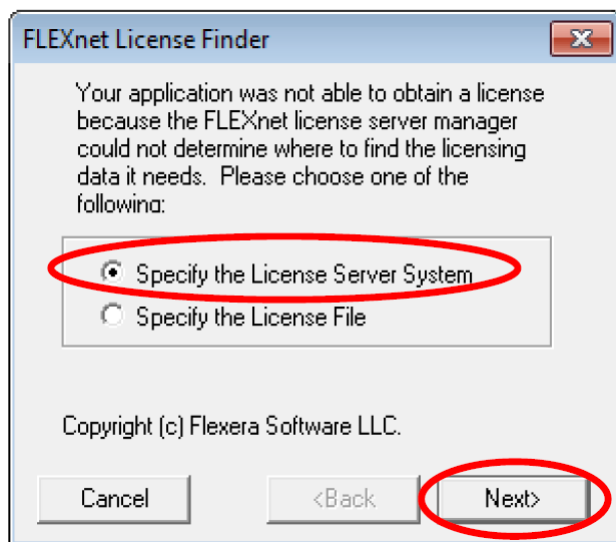


Click on “Dashboard” and then “Concurrent” to display modules that are licensed. This may take a few seconds to update.

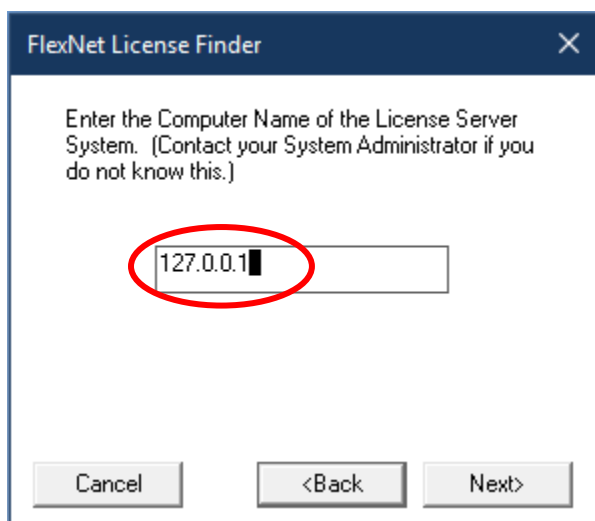
The screenshot shows the FlexNet Publisher web interface. The top navigation bar includes 'User Name: admin', 'Help', 'Sign Out', and a dropdown menu with 'Dashboard' and 'Administration' (both circled in red). The main content area is divided into two sections: 'Alerts' on the left and 'Licenses' on the right. The 'Alerts' section shows '0 Critical' and '0' warnings. The 'Licenses' section shows a 'Vendor Daemon: simplus' and a table of licenses. The 'Concurrent' link is circled in red. The table lists various features and their versions, with 'In Use (Available)' and 'Expiration' columns.

Feature	Version	In Use (Available)	Expiration
AP_CHEMISTRY	8.0	0 (4)	1-SEP-2016
AP_DESCRIPTOR	6.5	0 (4)	1-SEP-2016
AP_MEDCHEMSTUDIO	8.0	0 (4)	1-SEP-2016
AP_METABOLISM	6.5	0 (4)	1-SEP-2016
AP_MODELER	6.5	0 (4)	1-SEP-2016
AP_PHYS_CHEM_BIOL	6.5	0 (4)	1-SEP-2016
AP_SIMULATION	6.5	0 (4)	1-SEP-2016

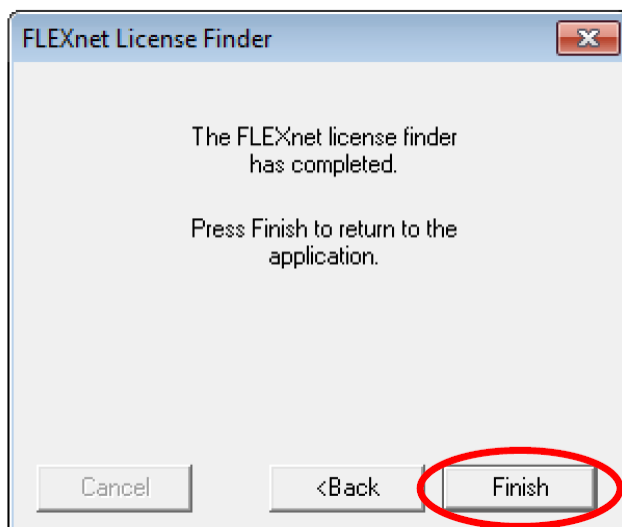
You can then close the internet browser. Starting ADMET Predictor will bring up the dialog box below. “Specify the License Server System” should already be selected, if not then please select it. Click on “Next>”.



Enter “127.0.0.1” and click on “Next>”. If ADMET Predictor 9.5 doesn’t start then try to start it again but use “localhost” instead of “127.0.0.1”.



Click on “Finish” to launch ADMET Predictor.



This information will be stored in the computer's registry so you will not see these prompts the next time that you start ADMET Predictor. ADMET Predictor 10 will start.