

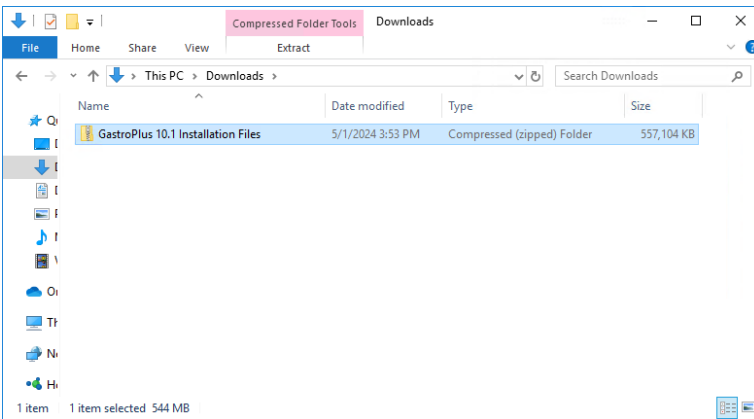


Installation Instructions for GastroPlus 10.1 (GPX™) Using a Network/Float License

Before you begin

In order to install GastroPlus, you must have administrative privileges. A network installation of GastroPlus will require access to a Flexera License Server for the application to run.

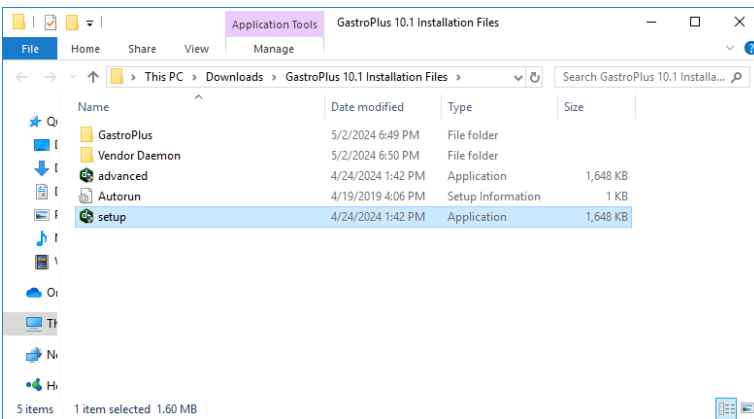
Installation



The first step in the process is to extract the files from the GastroPlus-10.1 Installation Files.zip file.

Right-click on the GastroPlus-10.1 Installation Files.zip and select "Extract All...".

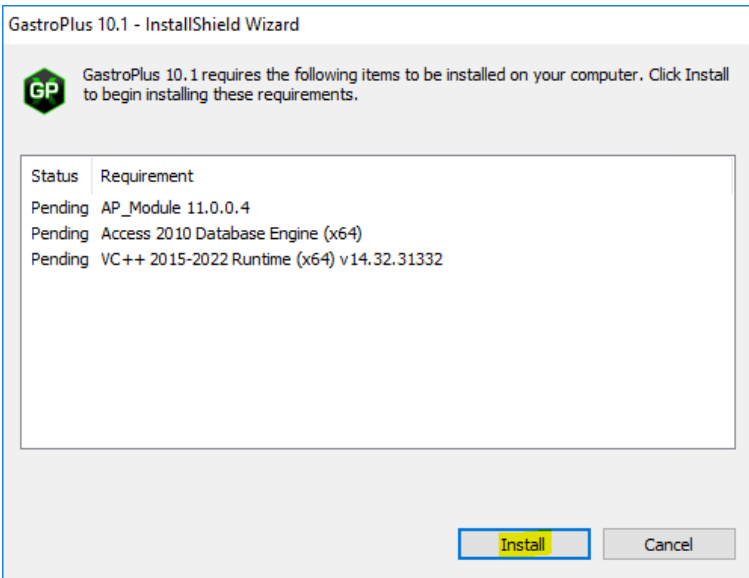
Accept the default destination folder and click on "Extract".



In the GastroPlus-10.1 Installation Files directory, right-click on "setup.exe" and select "Run as administrator".

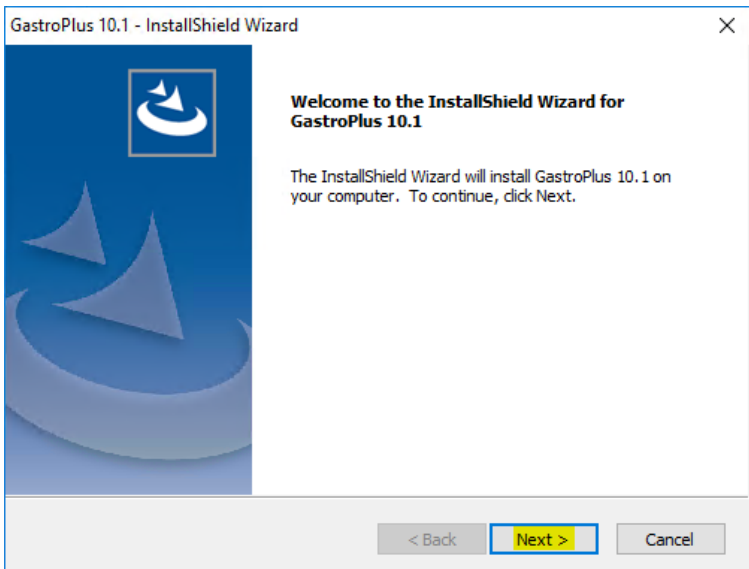


This will bring up the installation menu. Select "GastroPlus 10.1".



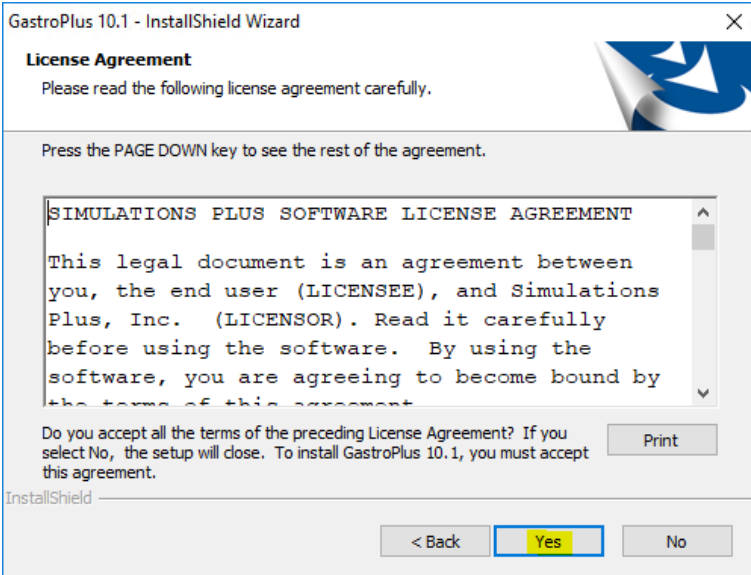
GastroPlus requires several items that may already be installed on your system. These items will be installed as needed.

Click on "Install" and the required items will be installed.



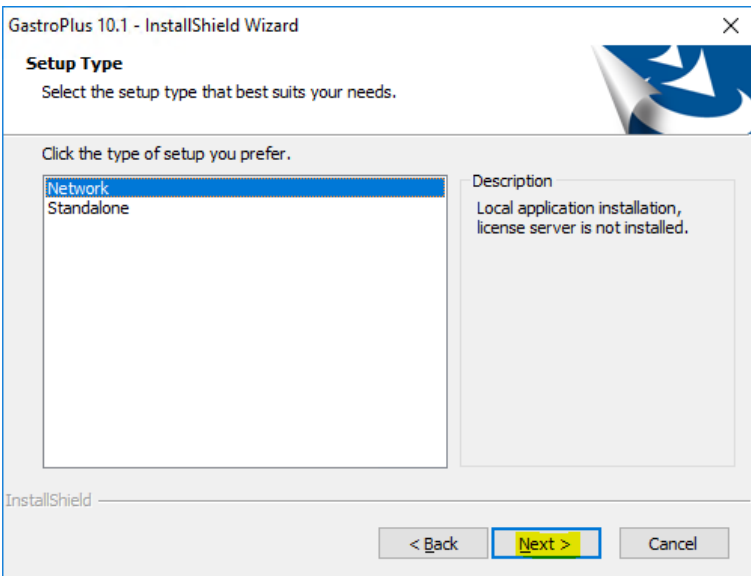
The GastroPlus installation wizard will begin.

Click on "Next" to begin.



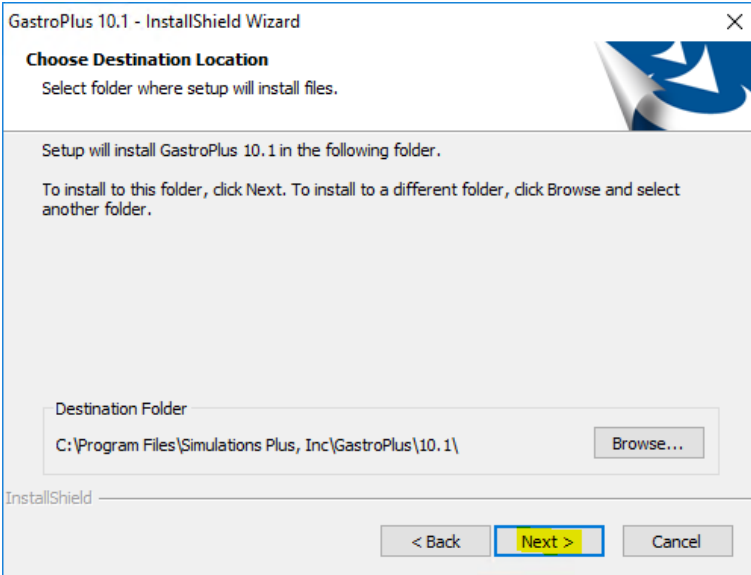
The license agreement will be displayed.

Select "Yes" if you agree to the licensing terms and continue the installation.



Now select the startup type.

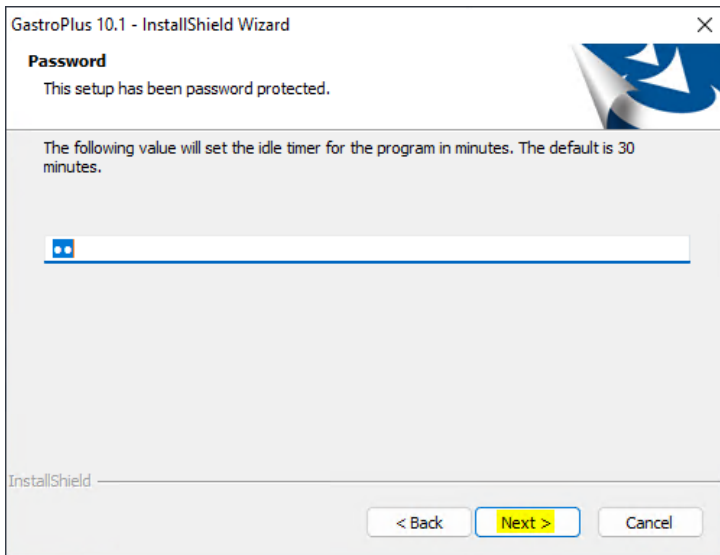
Select "Network", then click "Next" to continue.



Select the installation directory for GastroPlus.

Unless you have a specific need to install in a different directory, the default location is recommended.

Click "Next".

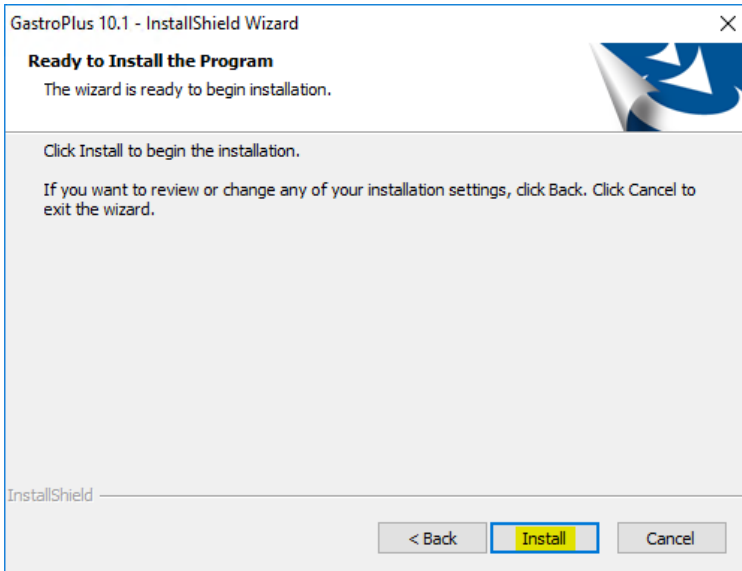


Network installations of GastroPlus use an inactivity timer to automatically close the program and free up a license.

This timer is only active if GastroPlus is left idle with no program activity or user input.

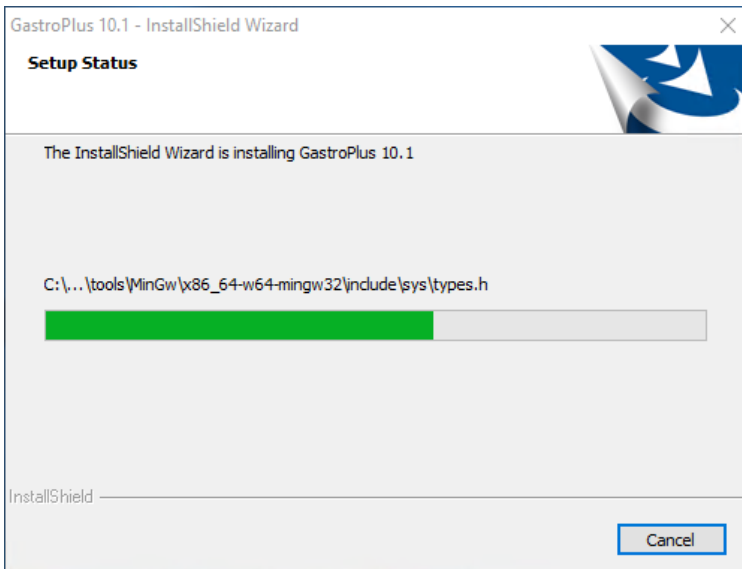
The default value is 30 minutes.

Click "Next" to continue.

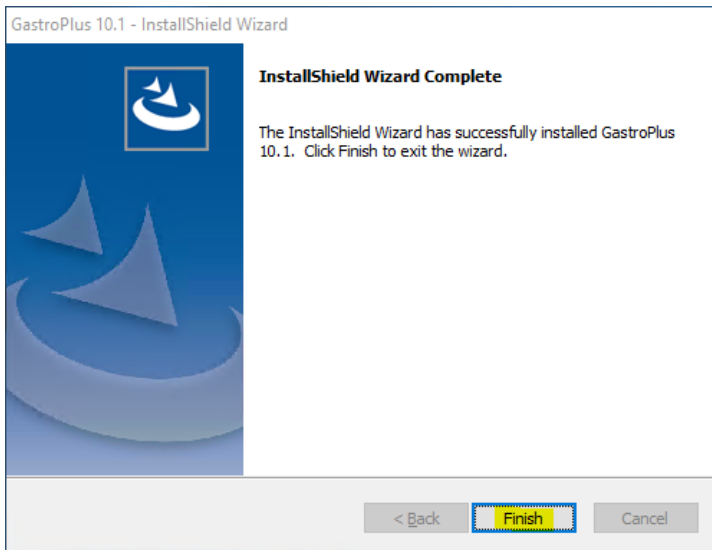


The installation has the information it needs to continue.

Click "Install" to install GastroPlus on your computer.



A progress bar will be displayed while GastroPlus installs the required files and components.



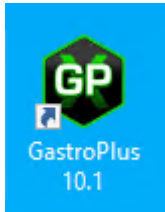
When the installation is complete, the Finish dialog will be displayed.

Click on "Finish" to complete the installation.

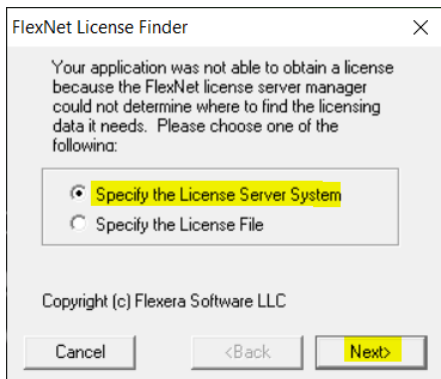
GastroPlus is now installed on your computer.



THE FOLLOWING STEPS ARE TO BE PERFORMED ONLY AFTER YOU HAVE IMPORTED THE LICENSE FILE PROVIDED TO YOU FROM SIMULATIONS PLUS INTO YOUR LICENSE SERVER.



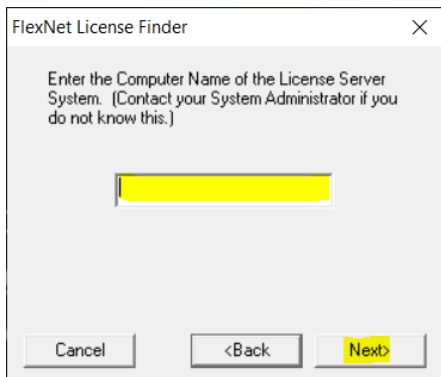
Double-click on the GastroPlus icon to launch GastroPlus.



The FLEXnet License Finder dialog will be displayed the first time you run GastroPlus.

Select the “Specify the License Server” option.

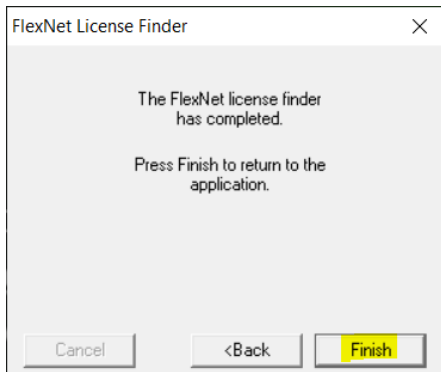
Click “Next”.



You will be asked to enter the name of the License Server. This will be provided by your IT Department.

Enter the IP address/Hostname/FQDN of the license server.

Click “Next” to continue.



The FLEXnet License Finder dialog should display the completed dialog.

Click on “Finish”. GastroPlus will now open.

If you need any further assistance, please feel free to contact us at support@simulations-plus.com.