



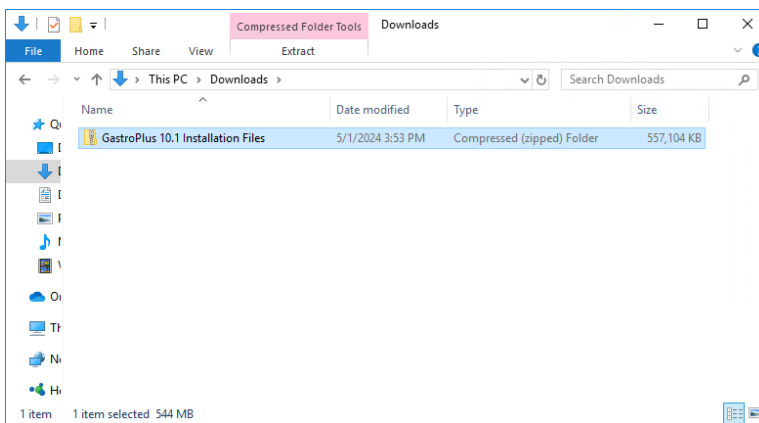
Installation Instructions for GastroPlus 10.1 (GPX™) Using a Standalone/Fixed License

Before you begin

In order to install GastroPlus, you must have administrative privileges. These instructions assume that neither GastroPlus 10.1 nor the Flexera licensing system has been installed on the computer.

During the GastroPlus installation process, a file named **SLP_HOSTID_Info.txt** will be created on your desktop. This file needs to be emailed to licensing@simulations-plus.com to create your license file. We will generate a license file (*LicenseFile.lic*) that is specific to your computer. The file will be emailed to you and needs to be imported into the Flexera licensing system to run the GastroPlus application. The directions for importing the file are at the end of this document.

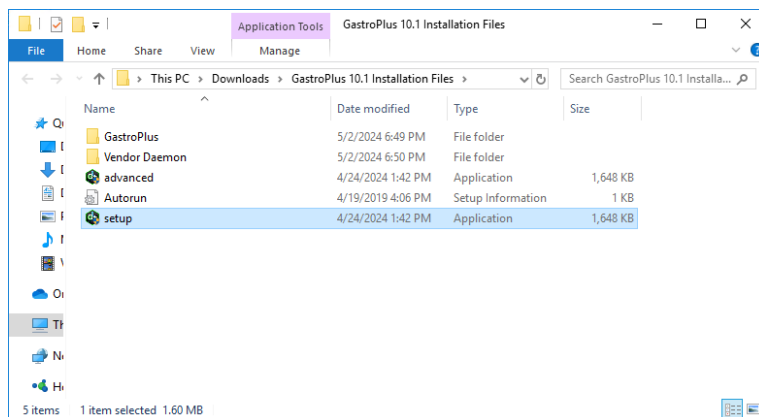
Installation



The first step in the process is to extract the files from the GastroPlus-10.1 Installation Files.zip file.

Right-click on the GastroPlus-10.1 Installation Files.zip and select “Extract All...”.

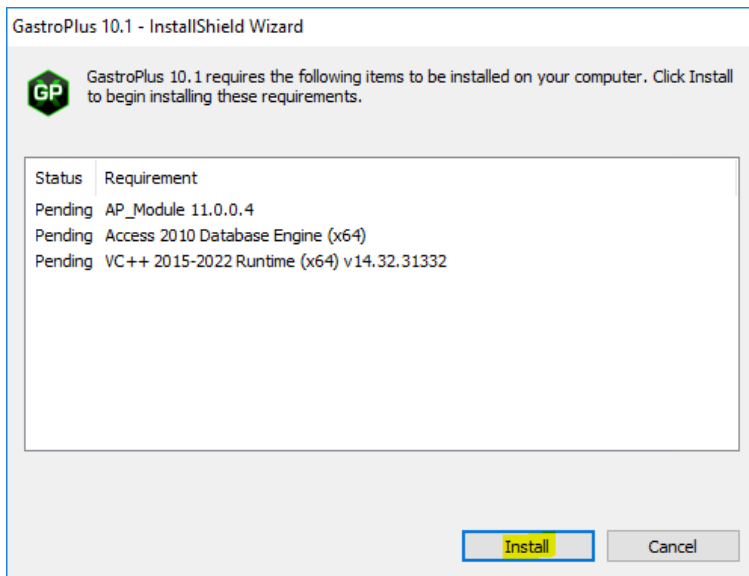
Accept the default destination folder and click on “Extract”.



In the GastroPlus-10.1 Installation Files directory, right-click on “setup.exe” and select “Run as administrator”.

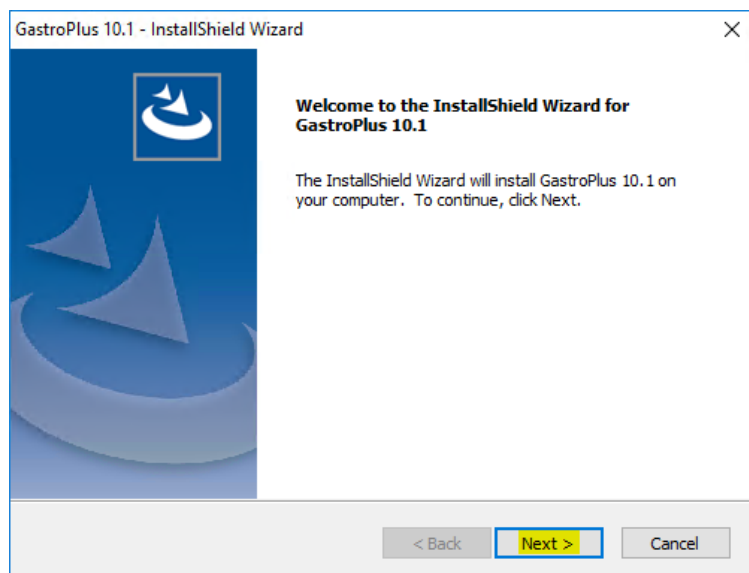


This will bring up the installation menu. Select "GastroPlus 10.1".



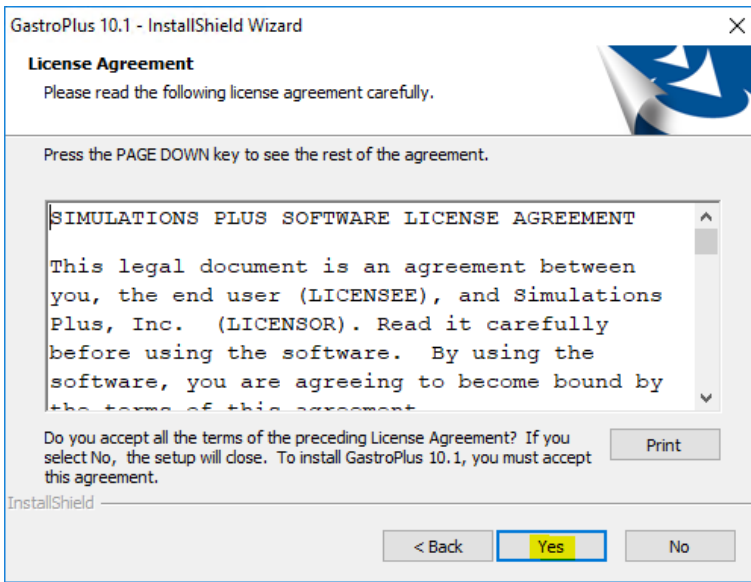
GastroPlus requires several items that may already be installed on your system. These items will be installed as needed.

Click on "Install" and the required items will be installed.



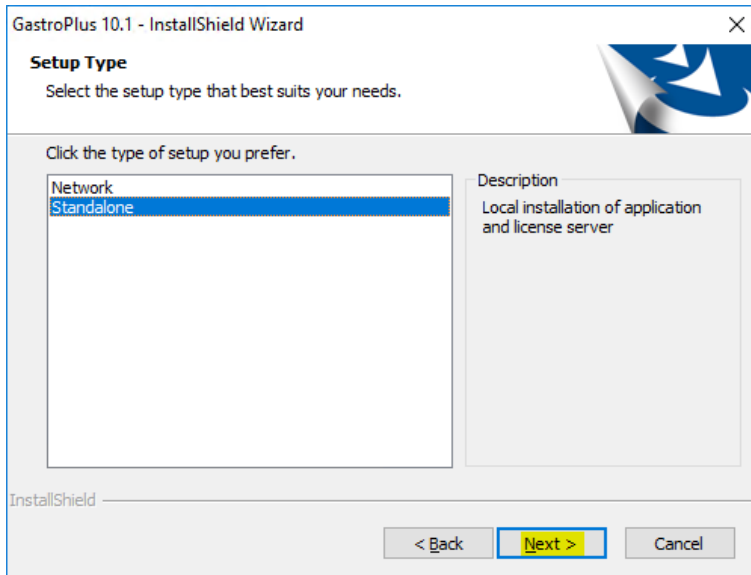
The GastroPlus installation wizard will begin.

Click on "Next" to begin.



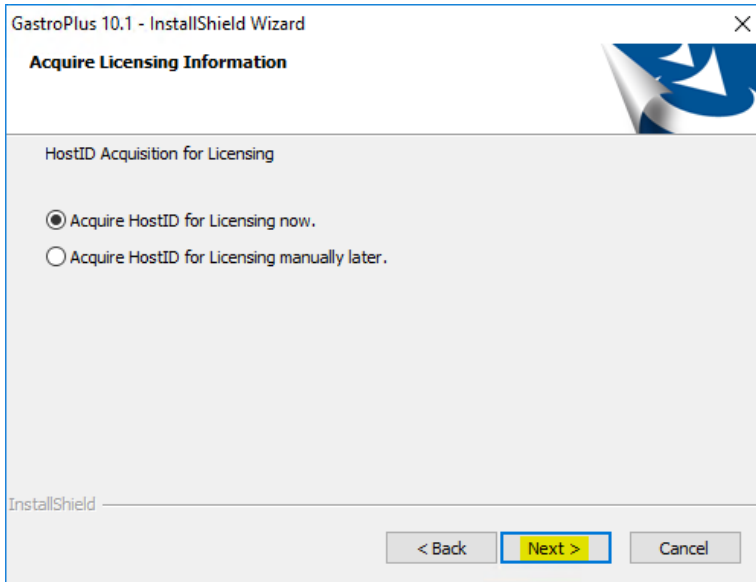
The license agreement will be displayed.

Select "Yes" if you agree to the licensing terms and continue the installation.



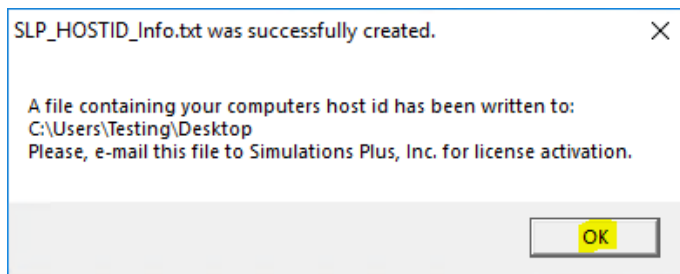
Now select the setup type.

Select "Standalone", then click "Next" to continue.



Ensure "Acquire HostID for Licensing now" is selected.

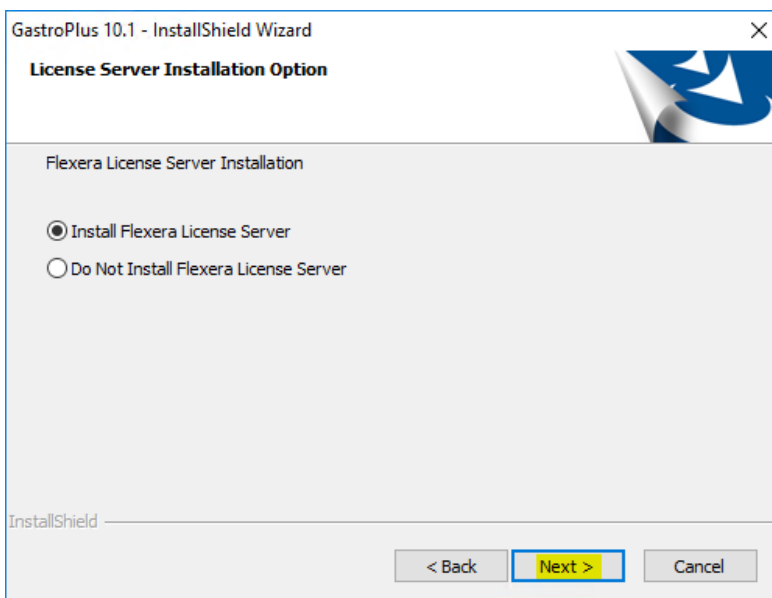
Then click on "Next".



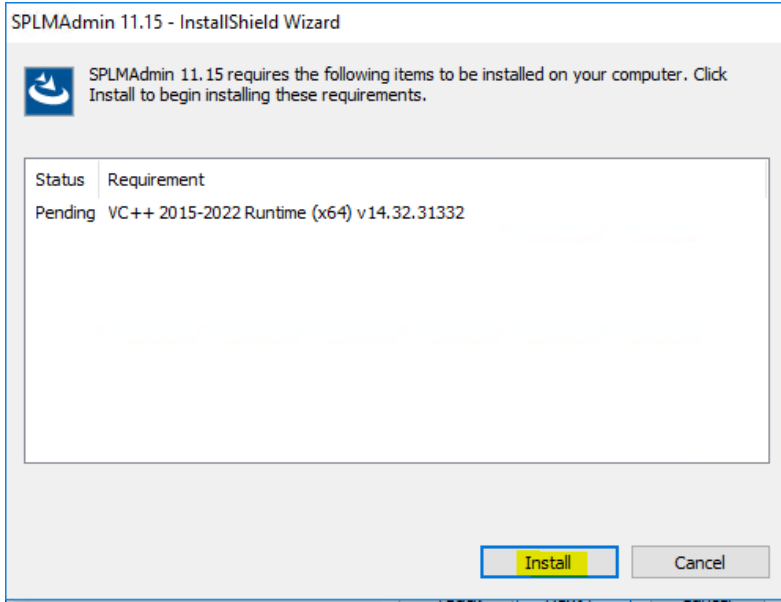
This pop-up indicates that the SLP_HOSTID_Info.txt file has been created and saved to your Desktop.

Please email this file to licensing@simulations-plus.com.

Click "OK" to continue.



Please select "Install Flexera License Server" then click "Next" to continue.



You may see a window asking you to install VC++ redistributable. Click "Install".

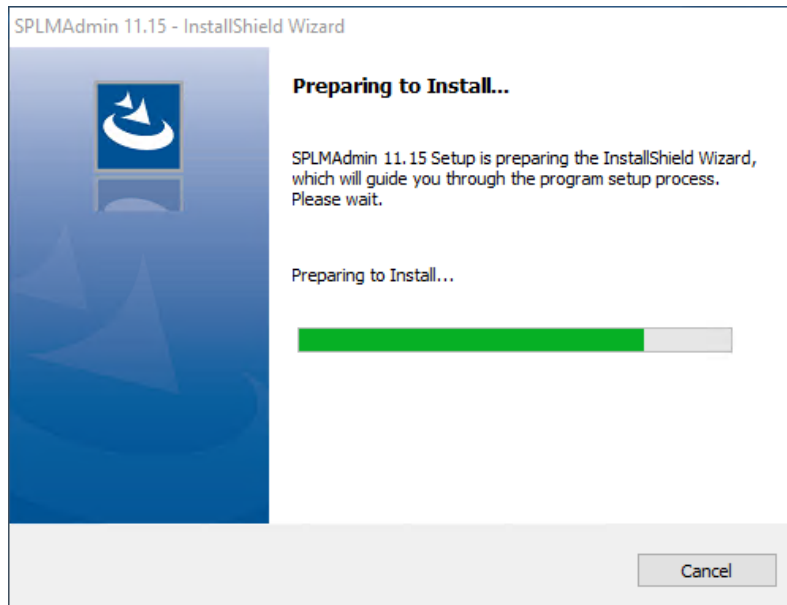


Installation of Flexera requires the Java Runtime Environment, which may already be on your machine. It will be installed, if needed.

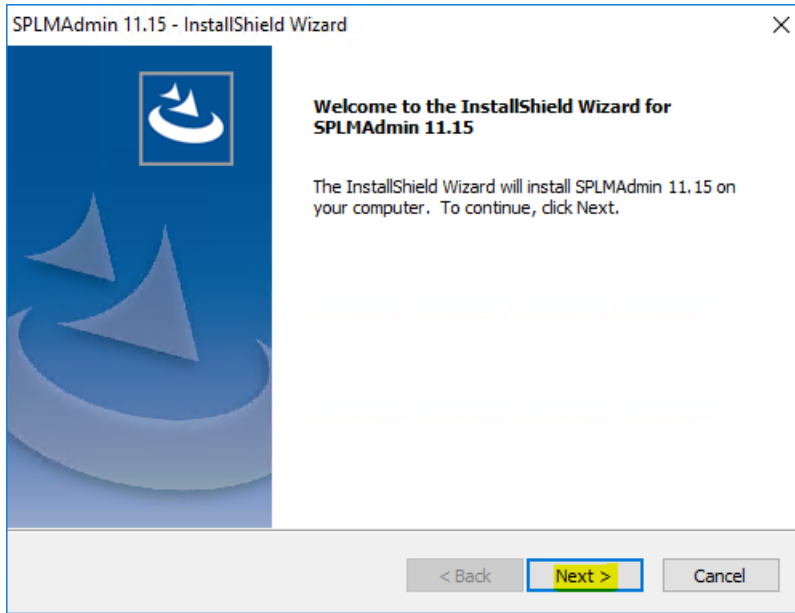
Click "Install" to continue.



Once Java installation is successful, click on "Close".

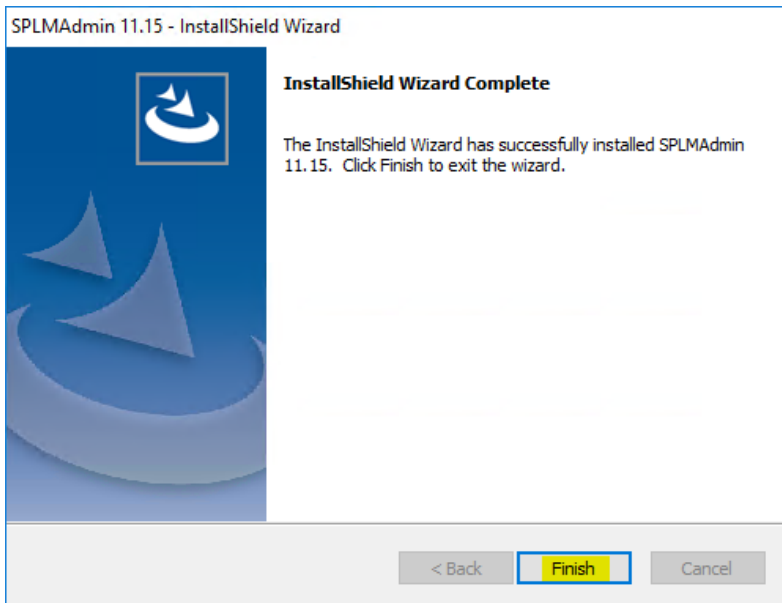


The installer is preparing for Flexera to be installed.

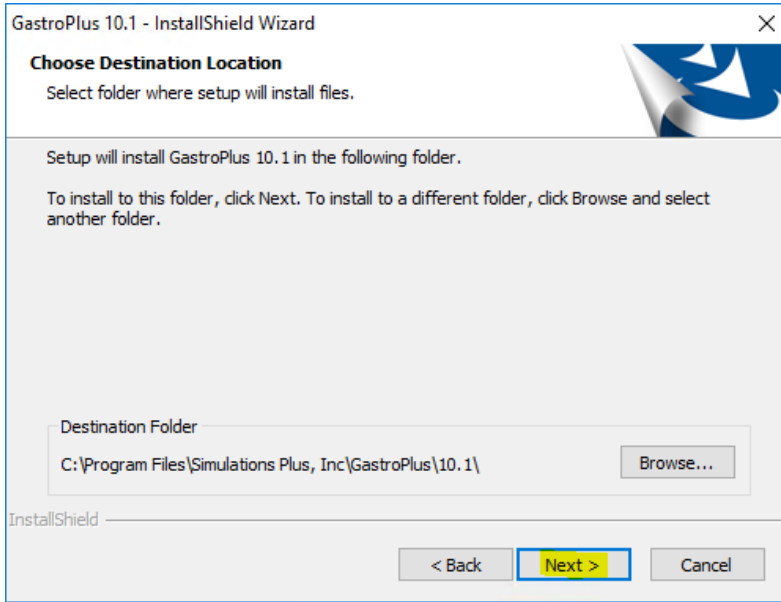


The Flexera introduction screen will display.

Click "Next" to continue.



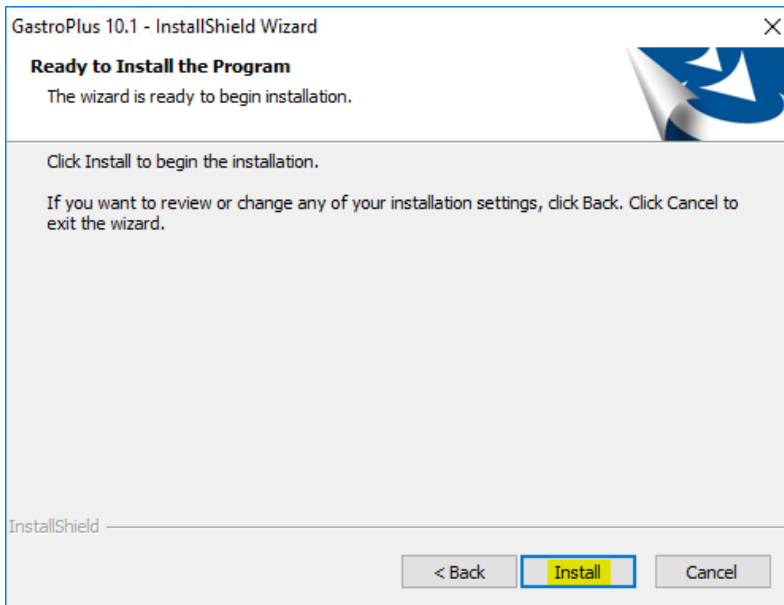
Click on "Finish" to complete the Flexera License Server installation.



After the Flexera licensing system is installed, GastroPlus installation will begin. Select the installation directory for GastroPlus.

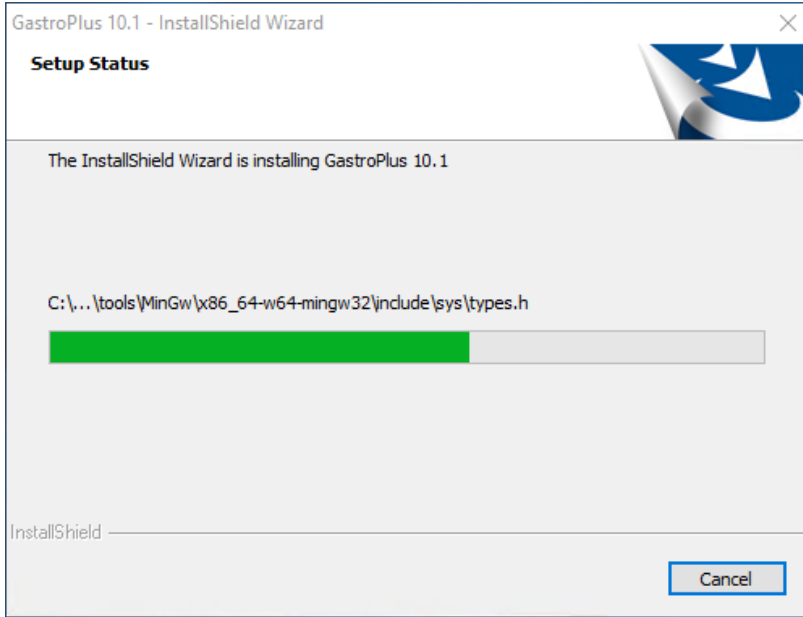
Unless you have a specific need to install in a different directory, the default location is recommended.

Click "Next".

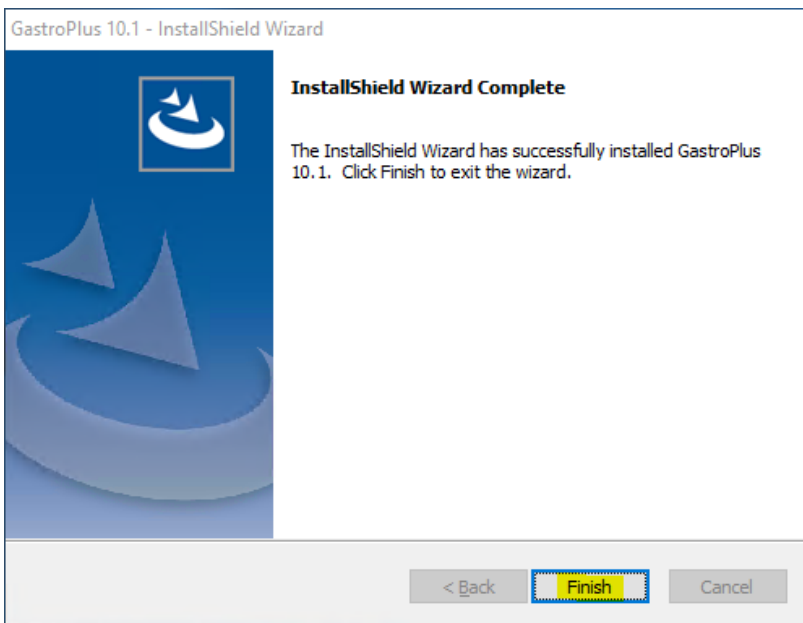


The installation has the information it needs to continue.

Click "Install" to install GastroPlus on your computer.



A progress bar will be displayed while GastroPlus installs the required files and components.



When the installation is complete, the Finish dialog will be displayed.

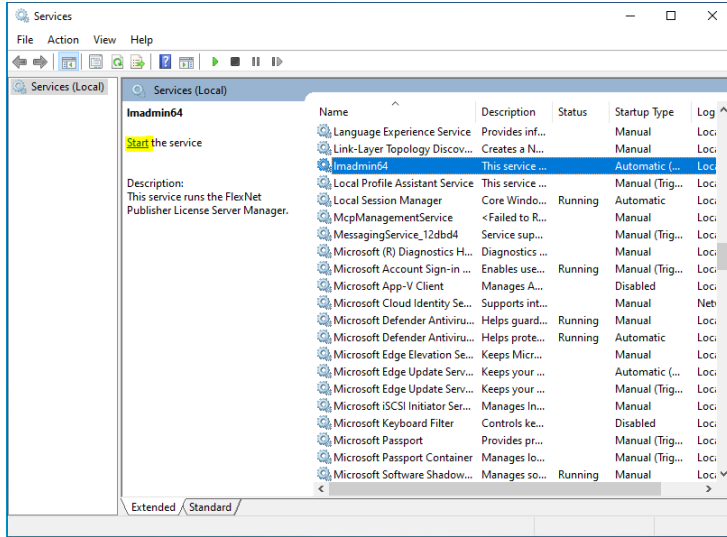
Click on "Finish" to complete the installation.

GastroPlus is now installed on your computer.

Importing the license file into Flexera

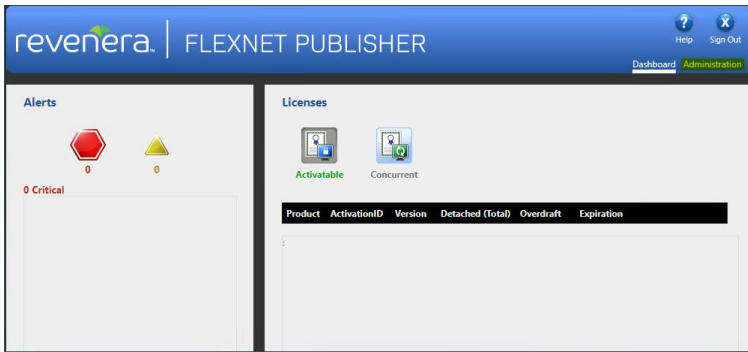


Open the Services application in Windows. Type "Services" in the Search box in lower left corner of your computer screen, and press Enter.



Locate Imadmin64 on the list of services. Start the service either by selecting Imadmin64 and then clicking on “Start” on the left side of the window, or by right-clicking on Imadmin64 and selecting “Start” from the context menu.

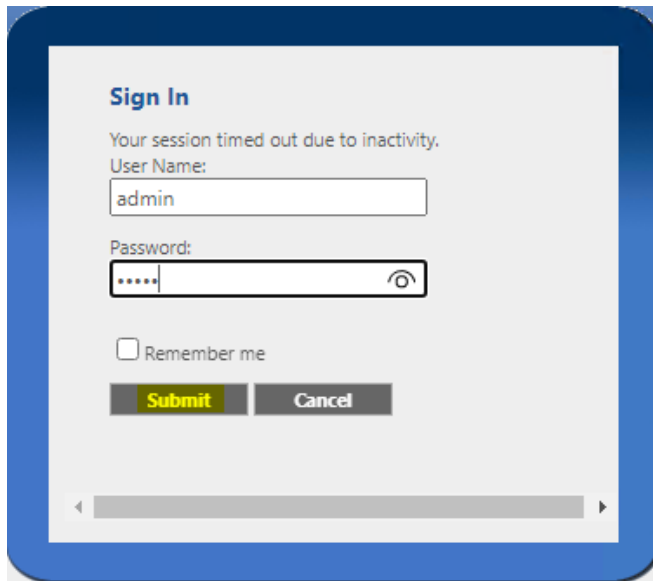
The Imadmin64 service must be running in order to import the license file.



Open an internet browser such as Firefox or Chrome.

Type `http://localhost:8090` into the address window and hit the return key.

Click on “Administration” in the upper right-hand corner.



You will be prompted for the “User Name” and “Password”.

Enter “admin” in both fields and click on “Submit”.

Change Password

Your password must be updated.

User Name: admin

Old password:
.....

New password:
.....

Confirm Password:
.....

Save

You will be prompted to change the password. The new password must contain at least 8 characters. We recommend that you use "admin1234".

Thus, enter "admin" for the old password and "admin1234" for the remaining two passwords. Then click "Save".

NOTE:

If you are unable to successfully update the password and get the error message "Your old password is incorrect", please refer to the "Set the Default Password" section below, which describes how to fix this error. Then come back here to continue with the next steps.

Re-Sign In After Password Update

User Name:
admin

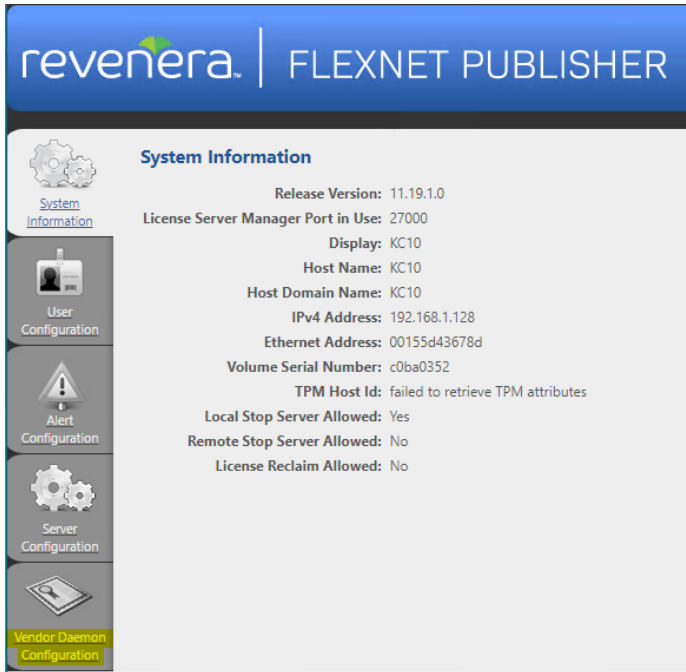
Password:
.....

Remember me

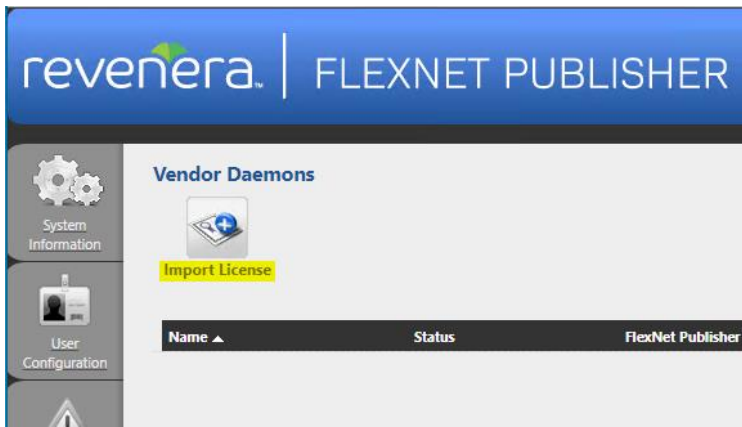
Submit

You will be prompted to re-sign in with the new password.

Enter "admin" for the user name and "admin1234" for the password. Then click "Submit".



Click on the “Vendor Daemon Configuration” tab in the lower left-hand corner.



Click on “Import License”.



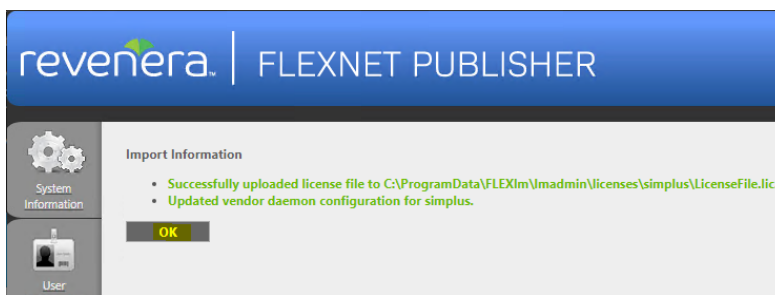
Click on “Choose File”.

Navigate to the directory containing the “LicenseFile.lic” file that was emailed to you and select the file.



Ensure "Overwrite License File on License Server" is checked.

Then click on "Import License".



This dialog will be displayed if importing the license was successful.

Click "OK".



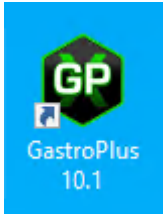
Click on "Dashboard" and then "Concurrent" to display modules that are licensed.

This may take a few seconds to update.

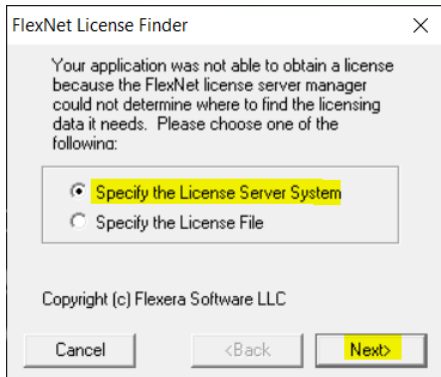
Point to the License Server



THE FOLLOWING STEPS ARE TO BE PERFORMED ONLY AFTER YOU HAVE IMPORTED THE LICENSE FILE PROVIDED TO YOU FROM SIMULATIONS PLUS INTO YOUR LICENSE SERVER.



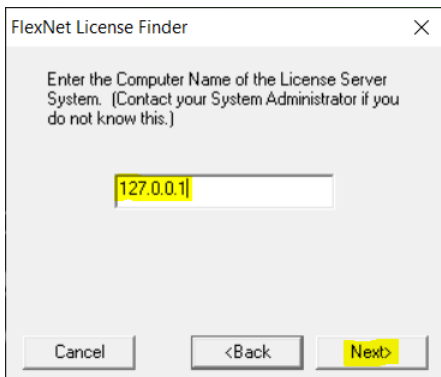
Double-click on the GastroPlus icon to launch GastroPlus.



The FLEXnet License Finder dialog will be displayed the first time you run GastroPlus.

Select the “Specify the License Server” option.

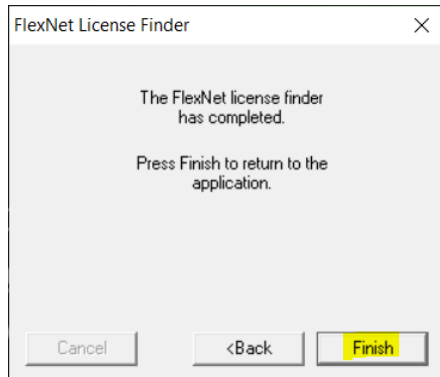
Click “Next”.



You will be asked to enter the name of the License Server.

Enter “127.0.0.1” (no quotation marks).

Click “Next” to continue.



The FLEXnet License Finder dialog should display the completed dialog.

Click on "Finish". GastroPlus will now open.

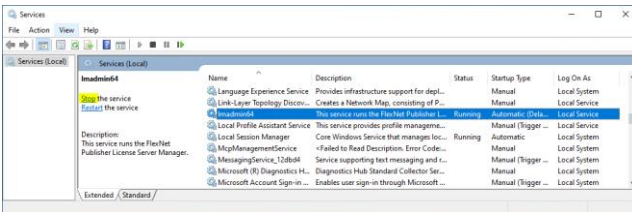
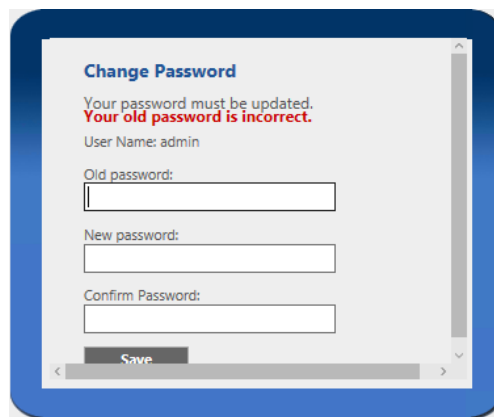
If you need any further assistance, please feel free to contact us at support@simulations-plus.com.

Set the Default Password



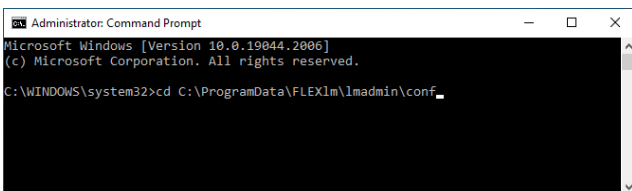
THE FOLLOWING STEPS ARE TO BE PERFORMED ONLY IF YOU INSTALLED FLEXERA AND YOU ARE UNABLE TO CHANGE THE DEFAULT PASSWORD.

If you experience a problem changing the default password, as seen on the screenshot, please follow the steps below, then go back to the main instructions to continue with importing the license.



Make sure lmadmin64 is not running. You can do this by opening Services and finding lmadmin64 in the list.

Stop lmadmin64 either by clicking on lmadmin64 and then on "Stop" in the left top corner of the window, or by right-clicking on lmadmin64 and selecting "Stop" from the context menu.



Launch the command line window as an administrator. Change the path to C:\ProgramData\FLEXIm\lmadmin\conf by typing the command:
cd C:\ProgramData\FLEXIm\lmadmin\conf
and hitting Enter.

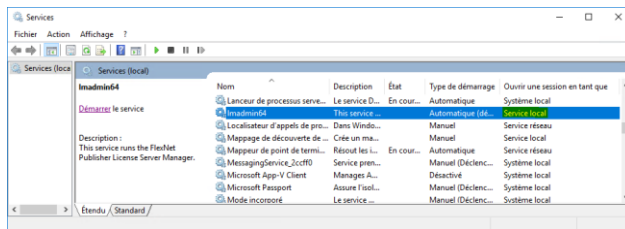
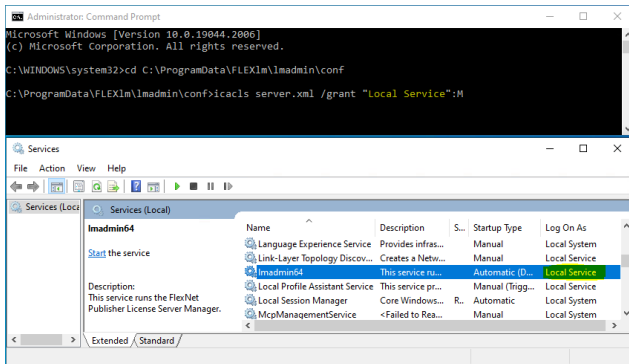
Execute the following command:

icacls server.xml /grant "<log on as local service>":M

IMPORTANT:

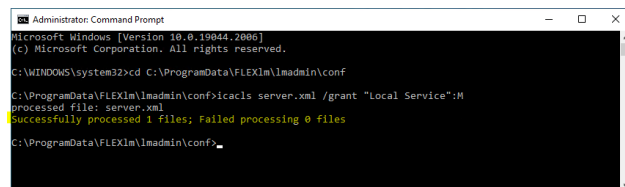
The <log on as local service> value is different in various languages, and it needs to be exactly as it appears in the Services window, in the "Log On As" column, when the equivalent of Local Service is selected. For example, the screenshot here is taken on an English operating system and it is called "Local Service", so the command would be:

icacls server.xml /grant "Local Service":M



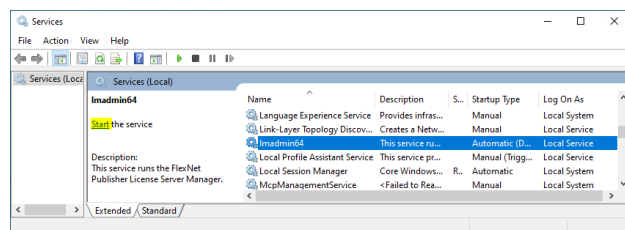
In French the service is called "Service local", so the command would be:

icacls server.xml /grant "Service local":M

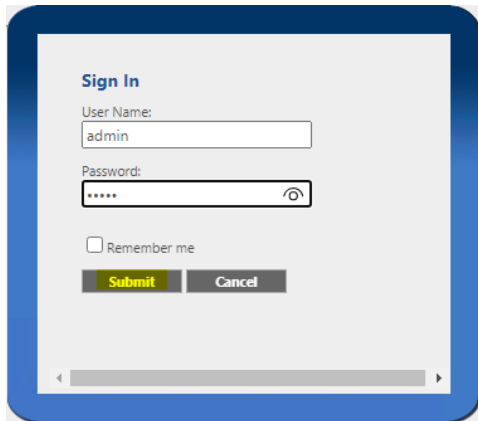


If the command executes successfully, you should receive a message as seen in the screenshot.

You may close the command window now.

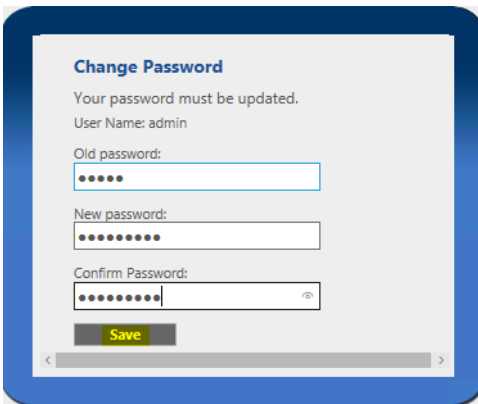


Restart Imadmin64 either by clicking on Imadmin64 and then on "Start" in the left top corner of the window, or by right-clicking on Imadmin64 and selecting "Start" from the context menu.



The screenshot shows a 'Sign In' form with a blue border. It contains the following elements: a title 'Sign In', a 'User Name:' label with a text input field containing 'admin', a 'Password:' label with a password input field containing five dots and a toggle icon, a 'Remember me' checkbox, and two buttons: 'Submit' (highlighted in yellow) and 'Cancel'.

Go back to the browser, close the tab with Flexera interface (<http://localhost:8090>) if you have not done so, and reopen it in a new window or a new tab. Then log in again using default credentials, with “admin” as both the user name and password, and click on “Submit”.



The screenshot shows a 'Change Password' form with a blue border. It contains the following elements: a title 'Change Password', a message 'Your password must be updated.', a 'User Name: admin' label, three password input fields labeled 'Old password:', 'New password:', and 'Confirm Password:' (each containing dots), and a 'Save' button (highlighted in yellow).

You should be prompted to change the password to a new one of at least 8 characters. We recommend that you use “admin1234”.

After setting the new password, go back where you left off in the main instructions to continue with importing the license.